



# ESPERANCE 2

STORE SET UP GUIDE

# ESPERANCE 2

## STORE SET UP GUIDE

This guide has been designed to assist you in supporting the launch of the new Esperance 2 Roof Top Tent.

To ensure consistency across our network, please follow the directives outlined in this update



# ESPERANCE 2

IN-STORE DISPLAY

Preferred option:

## Mounted to the Canopy display in the showroom

To complete the Camping set up story, we strongly recommend mounting your Esperance 2 to the Canopy display that contains the Slide Kitchen.



► **IMPORTANT:** Please ensure your Esperance 2 is colour coded to match your canopy colour



We recommend mounting the Esperance 2 directly to the cross bars



We recommend removing the BASE Rack from the camping set up, to allow for the Esperance 2



\*Photo is an example only, please follow descriptions

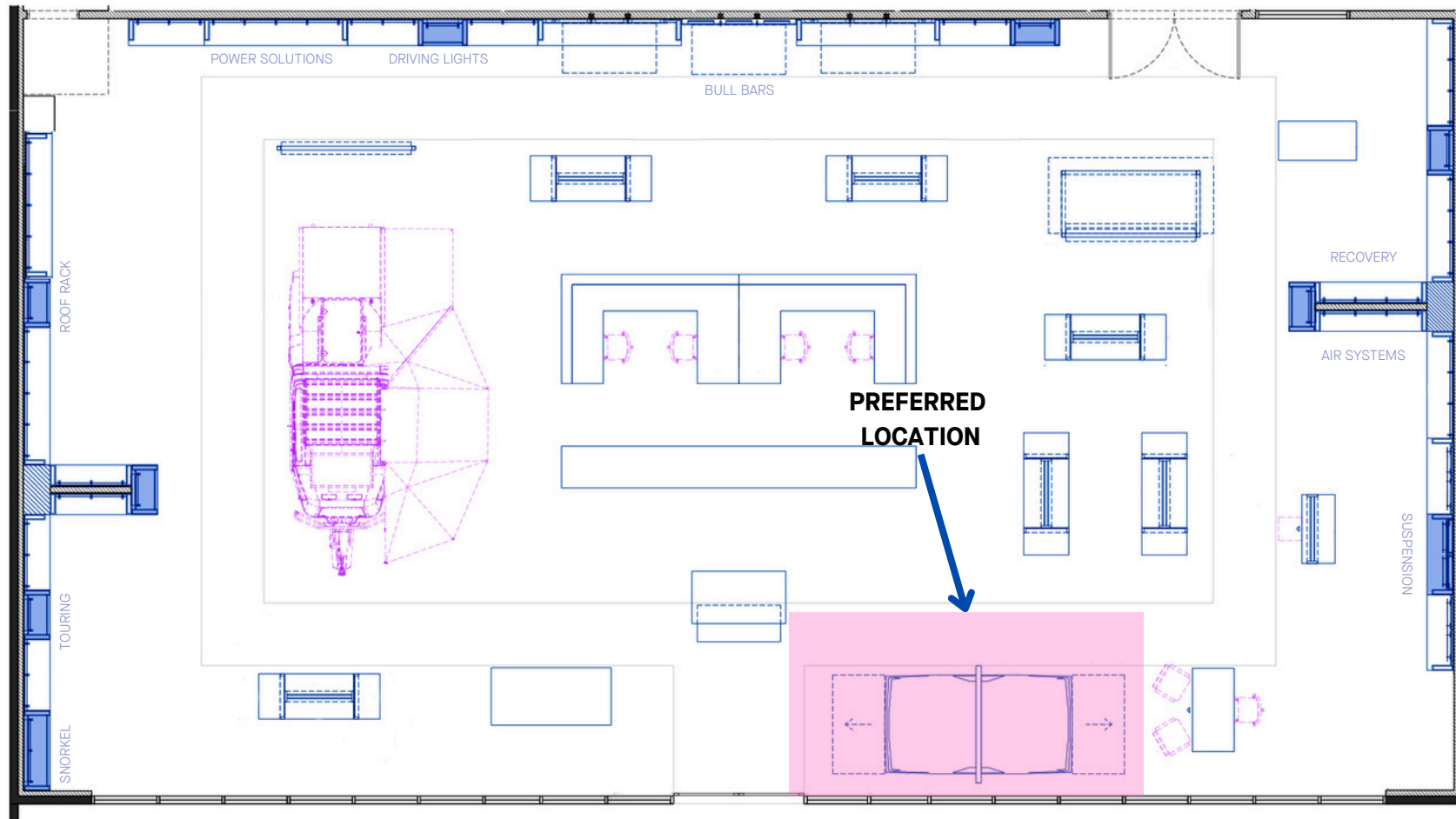
## SAFETY MATTERS



Please note: In order to reduce the total weight of the display, we recommend mounting the Esperance 2 directly to the cross bars

# ESPERANCE 2

## IN-STORE DISPLAY



The preferred location of the Esperance 2, is located on the canopy display. This is a suitable location for those stores that have limited floor space, but still wish to have the tent on display.

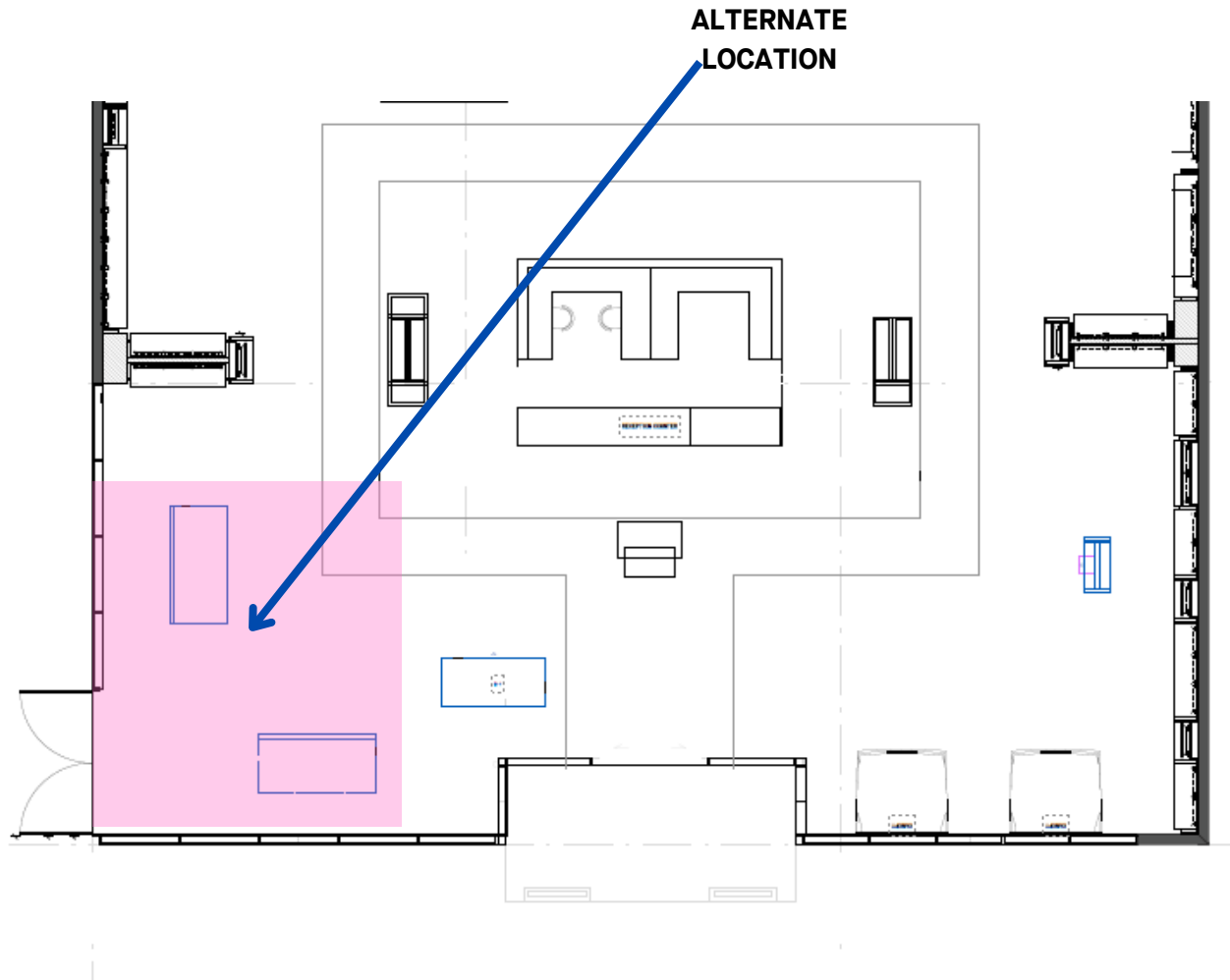
# ESPERANCE 2

## IN-STORE DISPLAY

### Secondary option:

#### DISPLAY STAND

Stores may be able to display the Esperance 2 on the Altitude display stand.



#### ► IMPORTANT:

The Altitude stand is ONLY to be used if your showroom has sufficient space to display both the Altitude and Esperance 2. If only one can be displayed – Altitude must go on the stand and the Esperance 2 on the canopy display.





# ESPERANCE 2

## IN-STORE DISPLAY

Stores that have the showroom space to display both the Altitude Roof Top Tent AND the Esperance 2 on a display stand will need to order the following:

### ESPERANCE 2

- ARB Esperance 2 Compact Hardshell RTT
- **Part no:** 217995 ALTITUDE TENT DISPLAY
- **Part no:** 1770100 BASE RACK
- **Part no:** 6177545 BASE RACK FIT KIT

### ALTITUDE STAND

Please refer to the appendices at the end of this document for build instructions.

### ARB Altitude Tent Display Stand

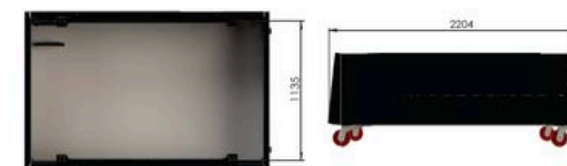


Note: the colors are for illustrative purposes only

**si retail**  
SOLUTIONS IN RETAIL



Back and Front elevation



Top and Side elevation

02/10/2024

THE DESIGNS & CONCEPTS SHOWN ARE THE PROPERTY OF SI RETAIL Pty Ltd. NO PART MAY BE SHOWN, QUOTED OR REPRODUCED TO ANY THIRD PARTY WITHOUT PRIOR WRITTEN PERMISSION FROM SI RETAIL Pty Ltd.

COPYRIGHT © 2023

Please see the Altitude VM set up guide for more information on displaying your Altitude tent in store.

# ESPERANCE 2

IN-STORE DISPLAY

## Limited space option:

### BRANCH MANAGER VEHICLE

Stores may be able to display the Esperance 2 on the Altitude display stand.

If showroom floorspace is limited, the Esperance 2 is to be mounted to the branch manager vehicle.

**► IMPORTANT:** Please ensure your Esperance 2 is colour coded to match your vehicle



# APPENDIX





## ARB ESPERANCE 2 ROOFTOP TENT

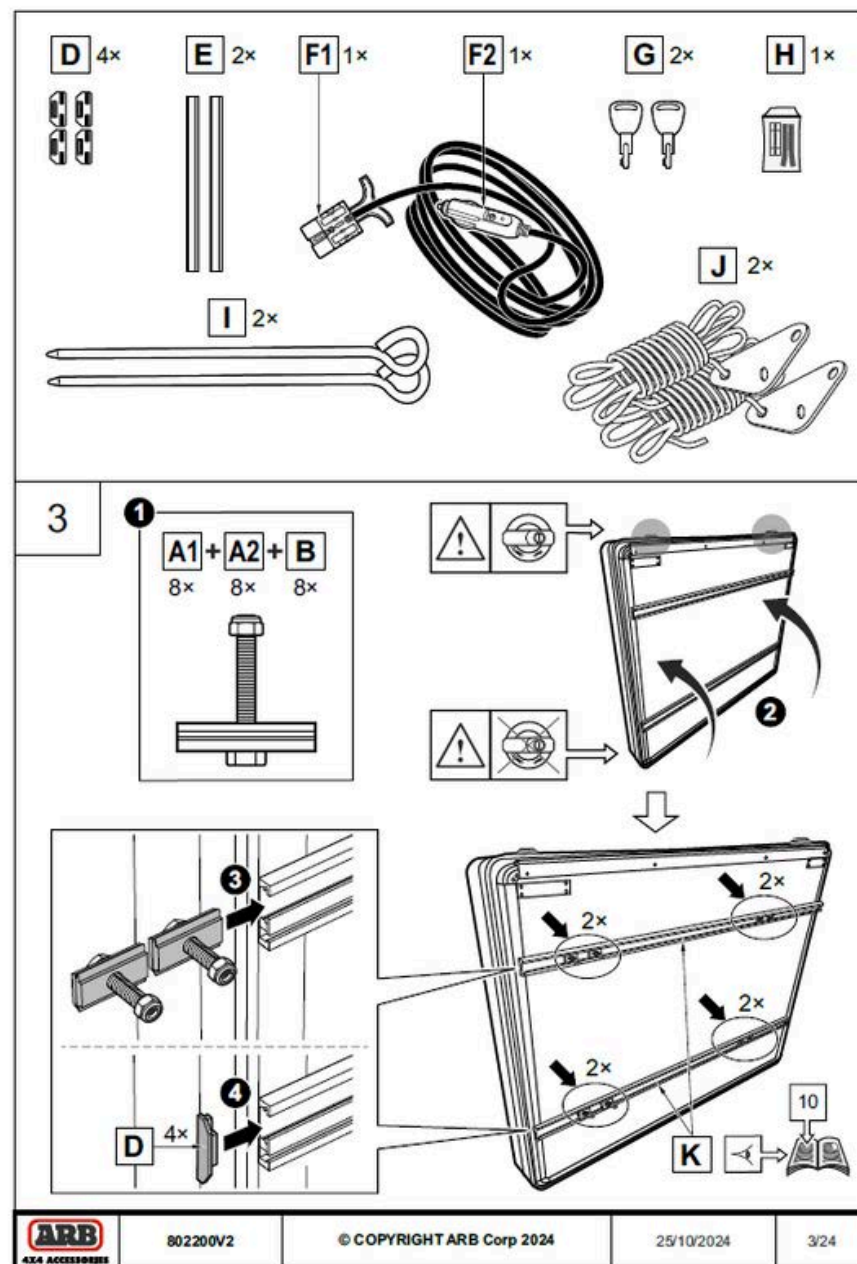
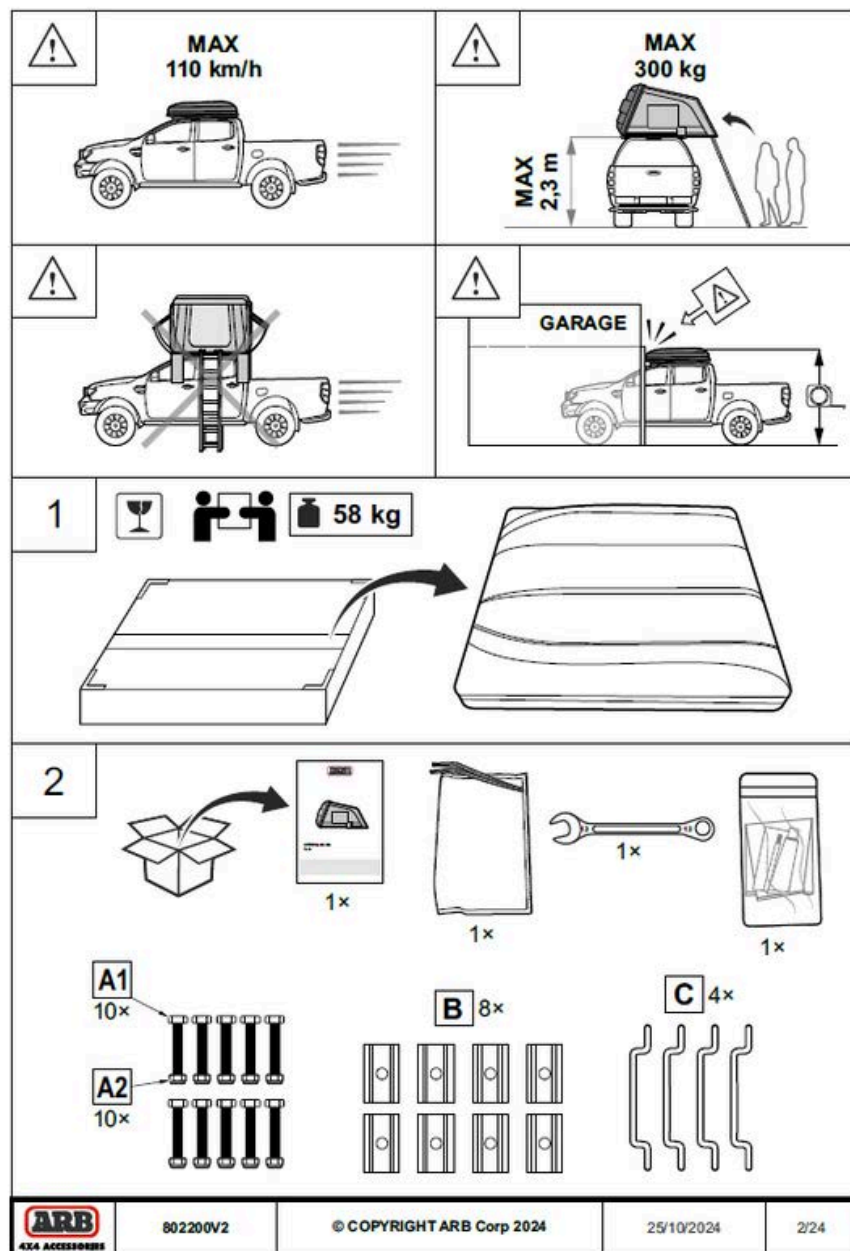
Product Info Bulletin No.	2600
Date	March 2025
Description	ARB Esperance 2   Compact Hardshell Rooftop Tent
Part No.	802500V2 (CC24)
RRP	\$3449 Inc. GST East Coast Metro (AUD) (\$495 paint)
Fitting Time	1 Hour
Availability Date	Now!

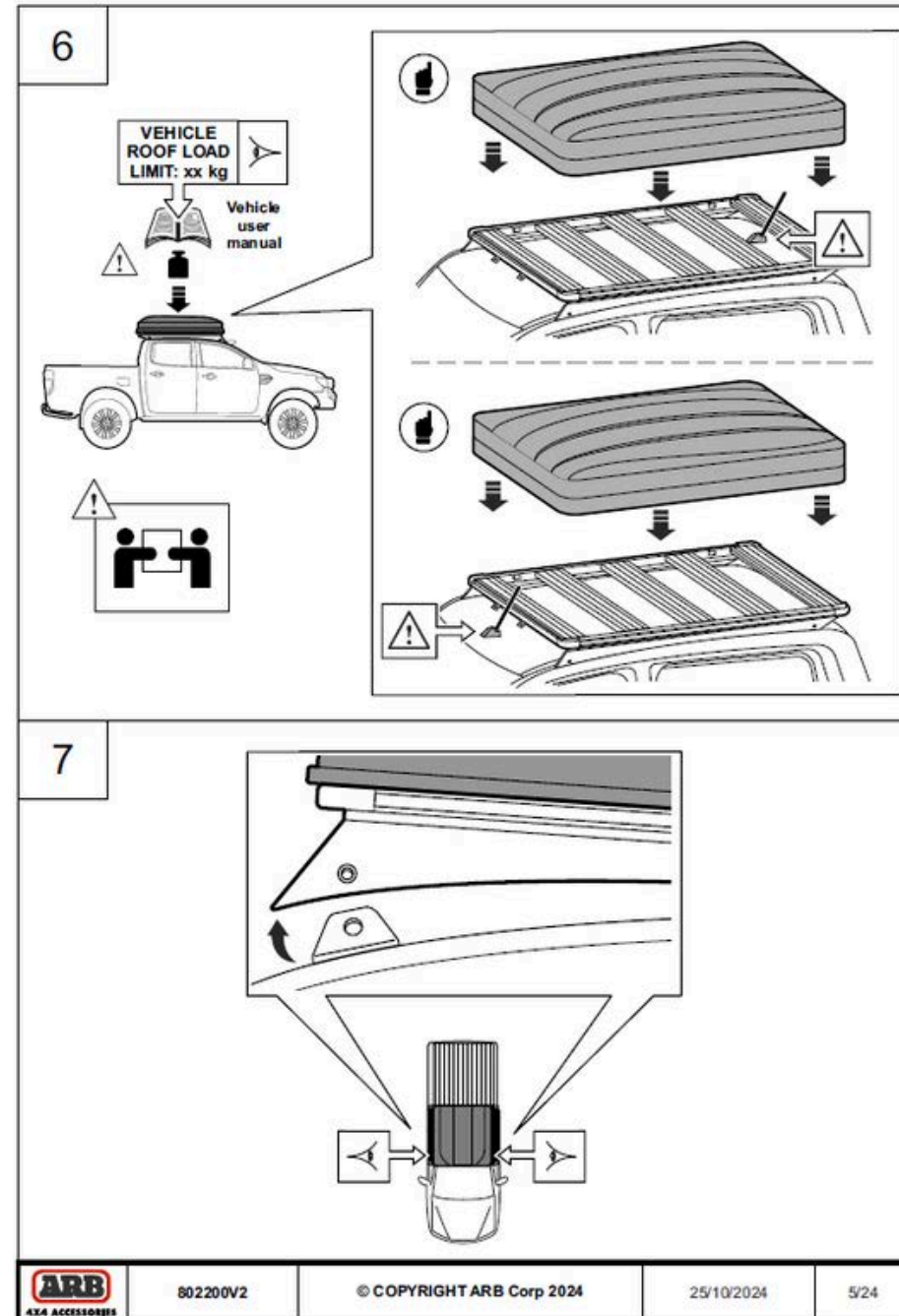
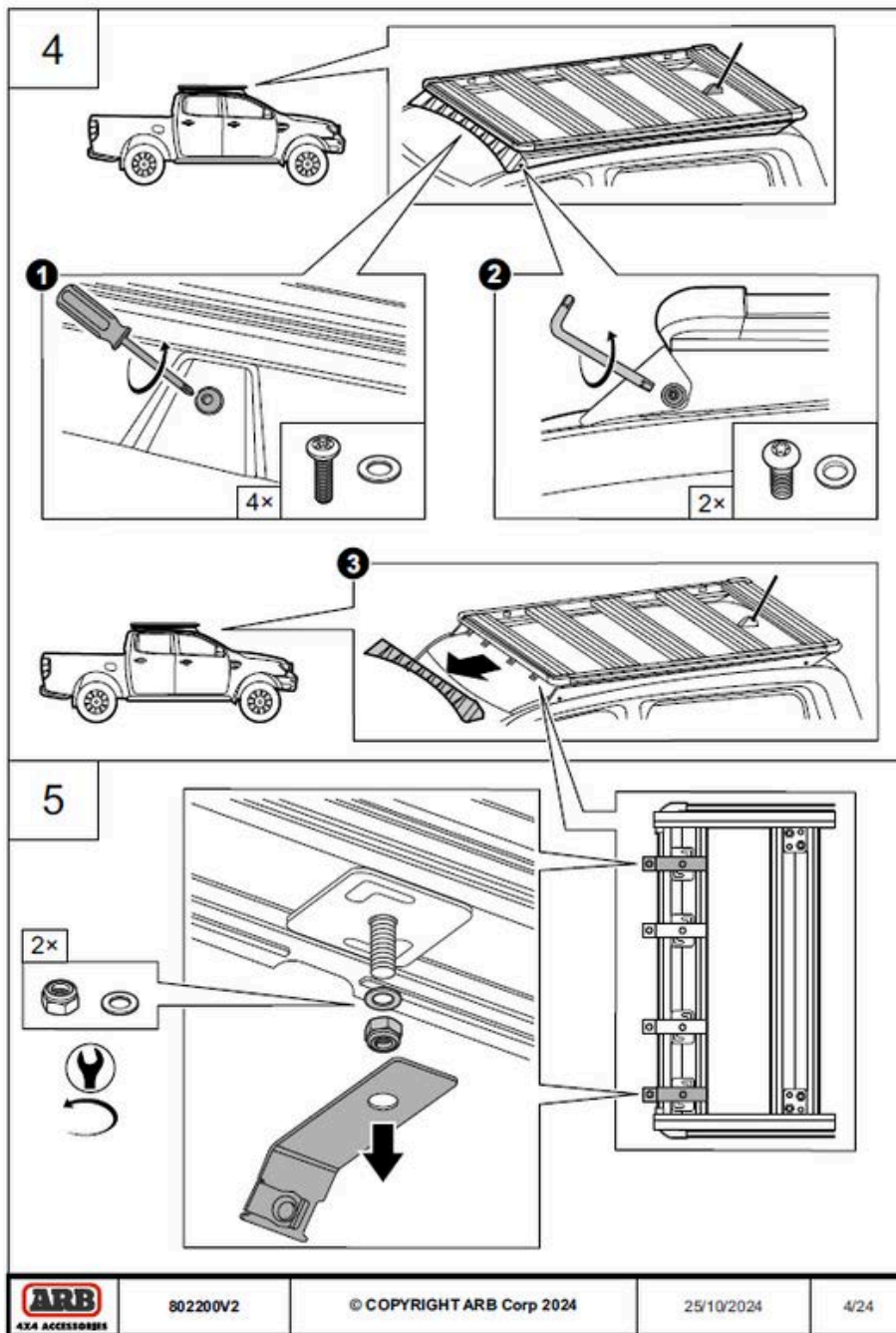
### Overview

Capturing three years of customer feedback since its initial launch, the next generation Esperance RTT delivers over 40 thoughtful product enhancements to refine the ultimate compact and lightweight rooftop tent experience.

Through a simplified operation, integrated 12v electrics and more comfort, ARB engineers have levelled up the user experience making the all-new Esperance perfect for adventurers chasing a lightweight but feature packed all-rounder!

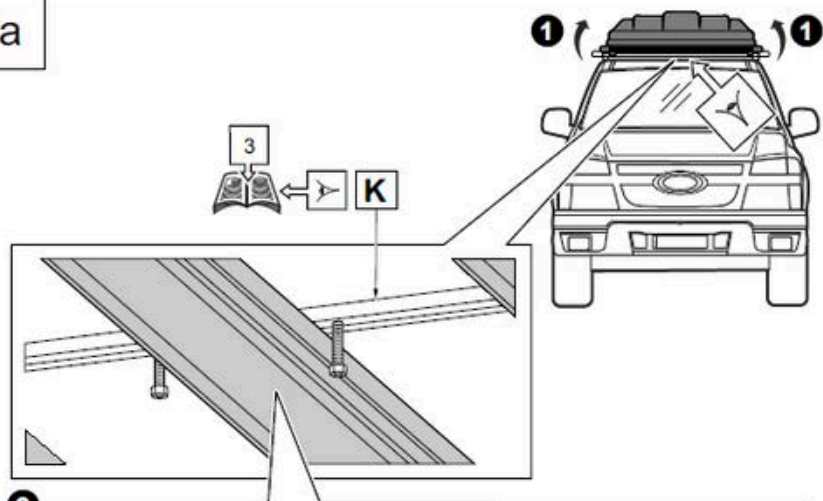
Whilst still coming standard in dark grey, ARB is delighted to now also offer customers the ability to paint the shell in any colour of your choice for truly tailored integration with your vehicle.





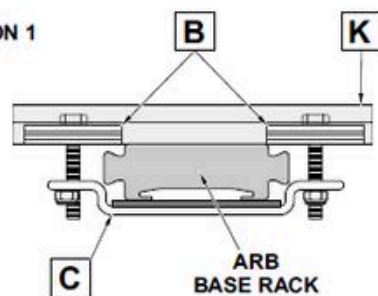


8a

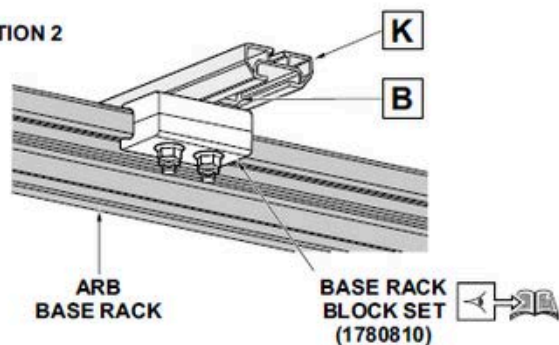


2

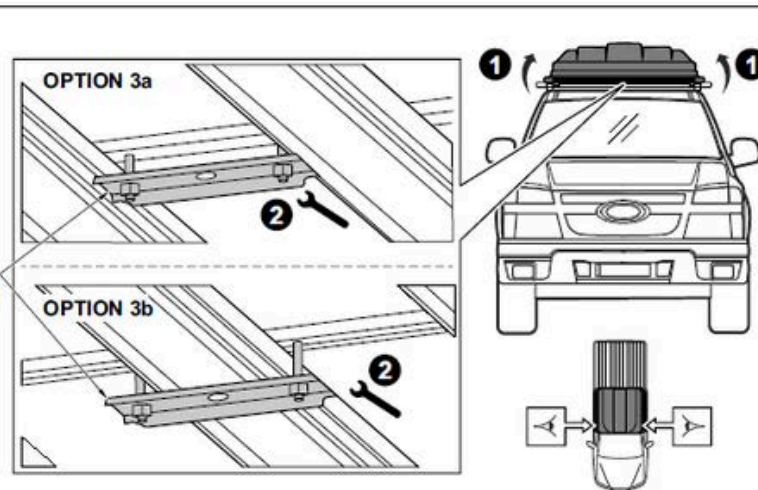
OPTION 1



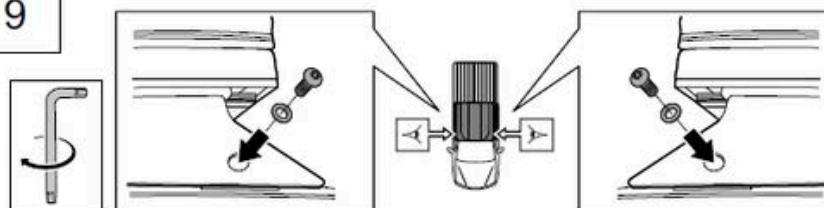
OPTION 2



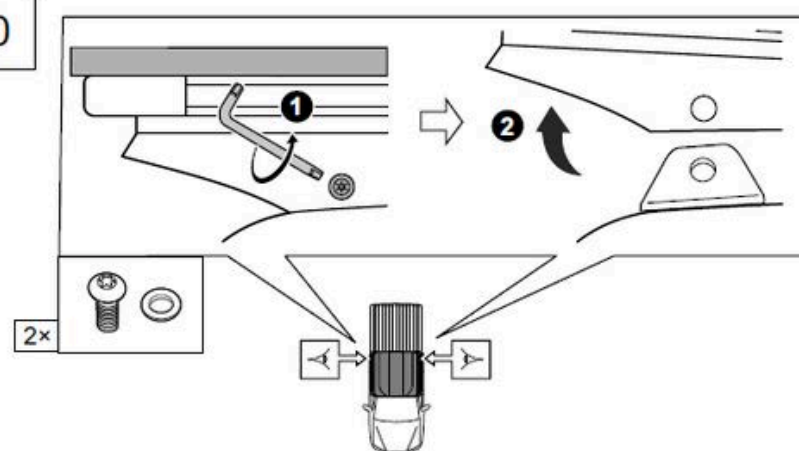
8b

BRIDGE  
PLATE  
NARROW  
(26160024)

9



10



802200V2

© COPYRIGHT ARB Corp 2024

25/10/2024

6/24

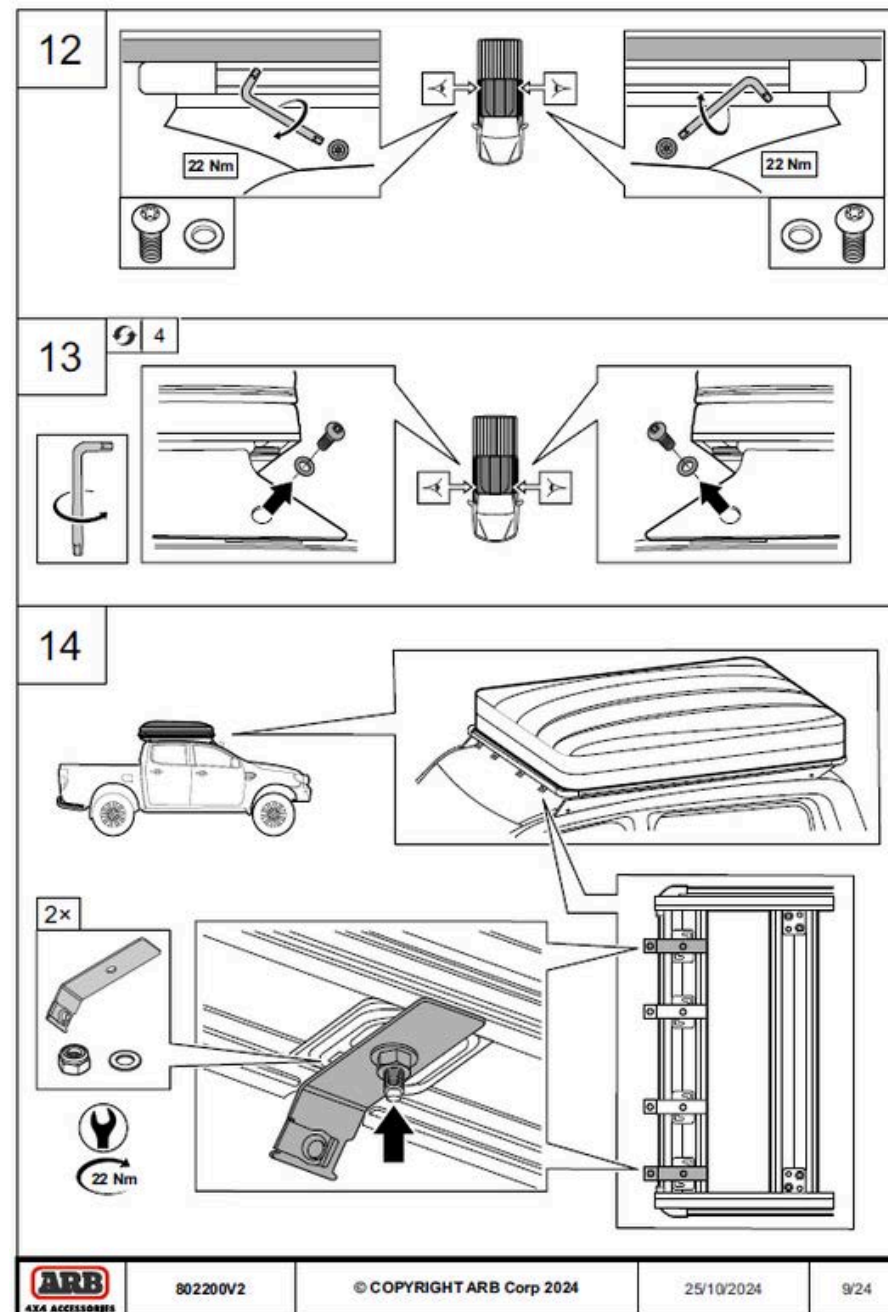
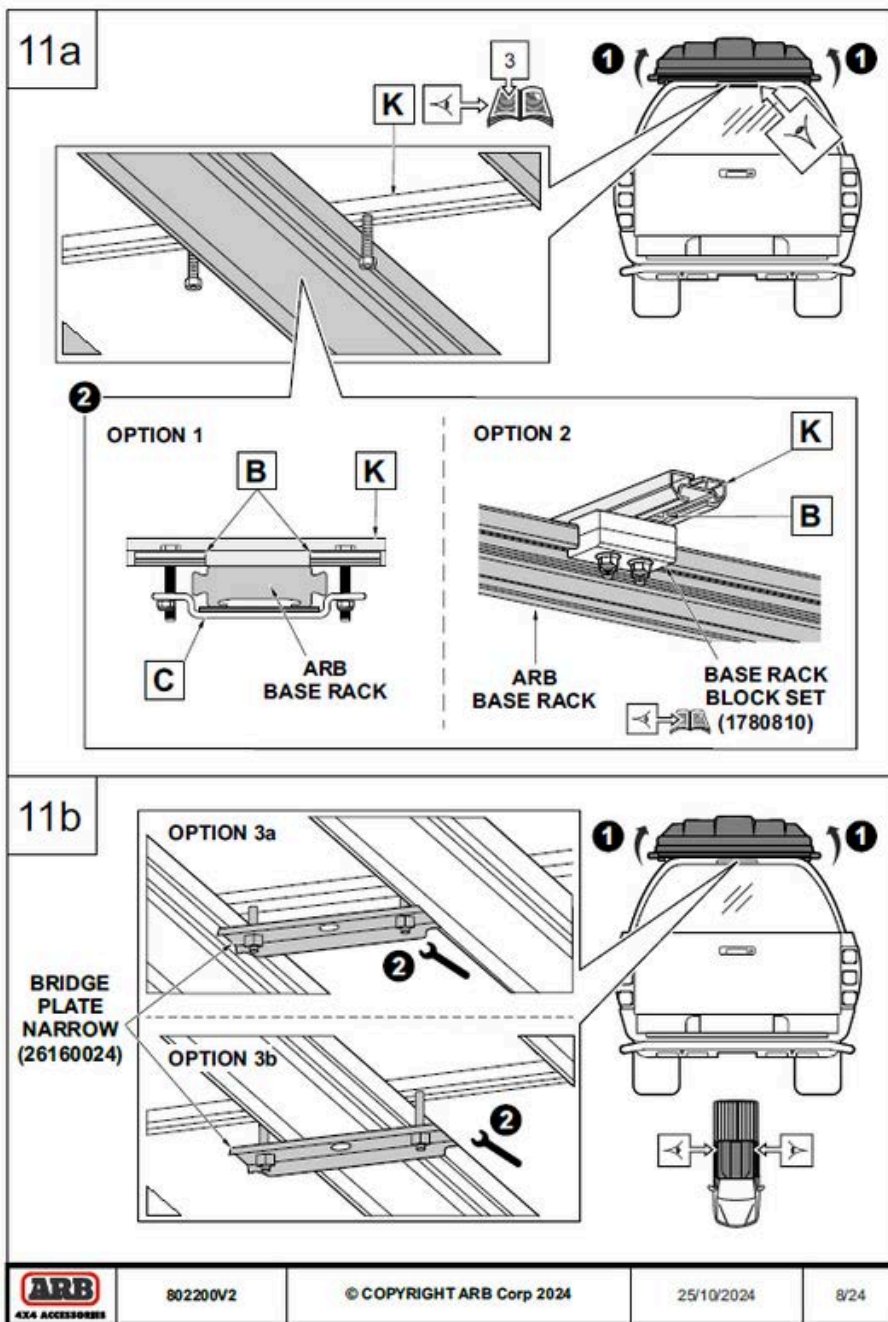


802200V2

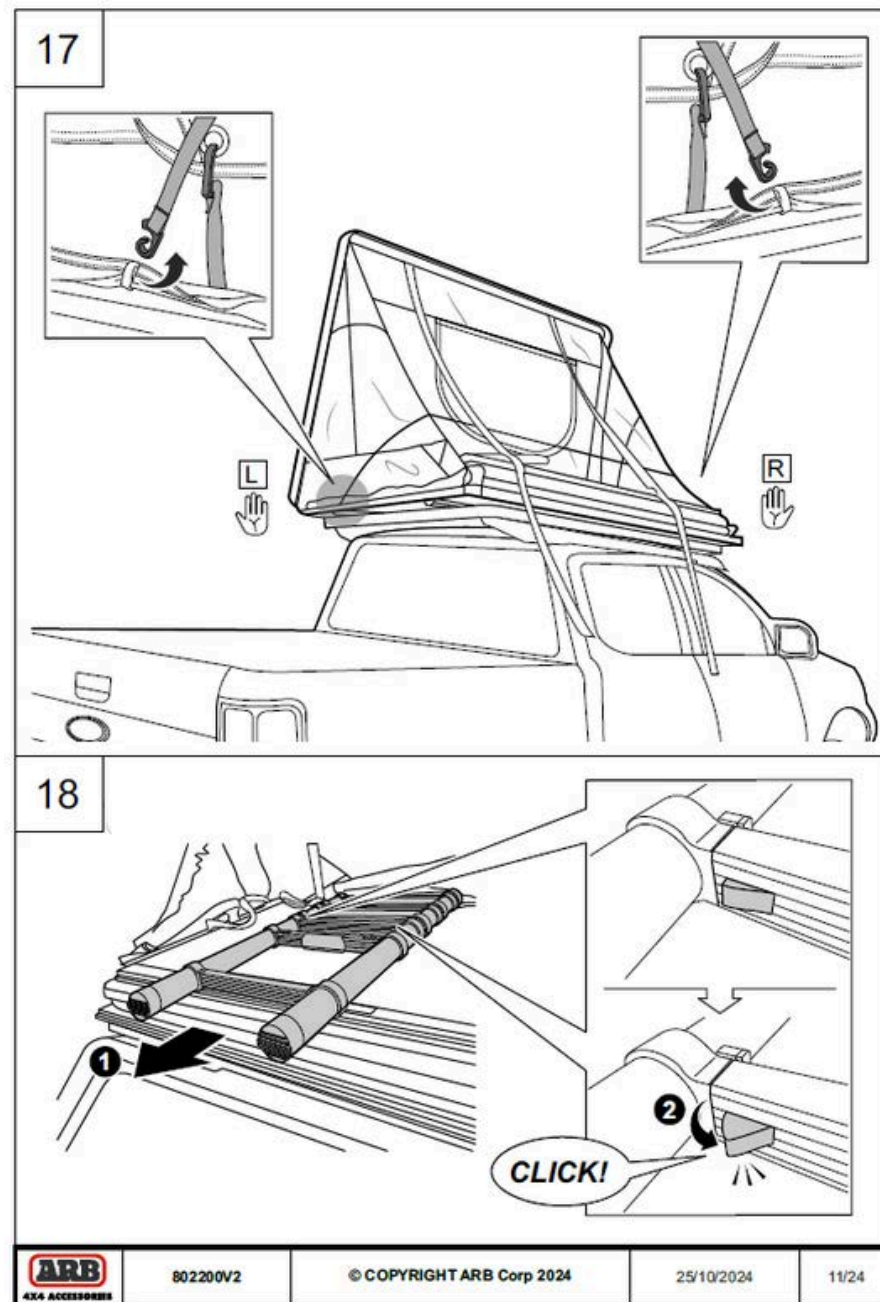
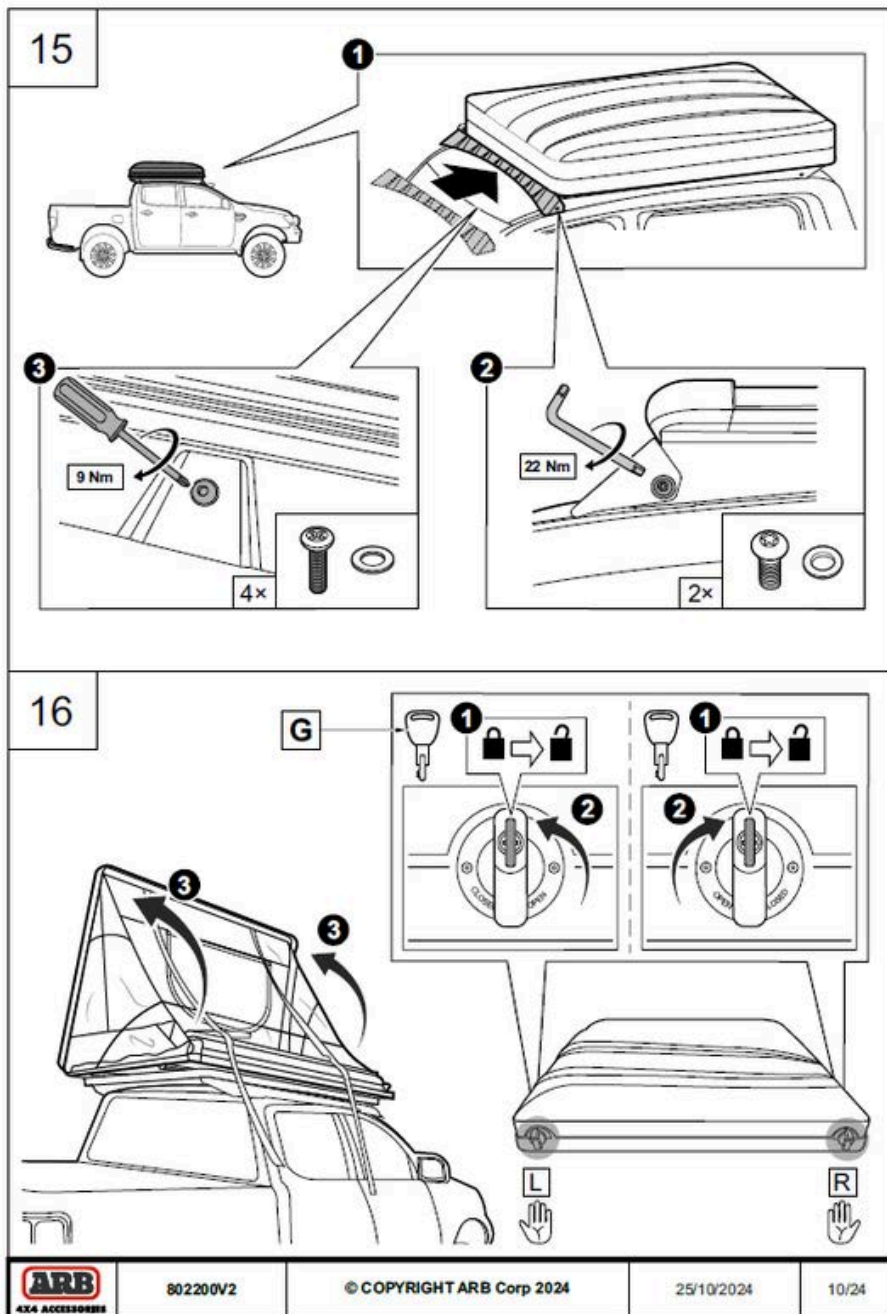
© COPYRIGHT ARB Corp 2024

25/10/2024

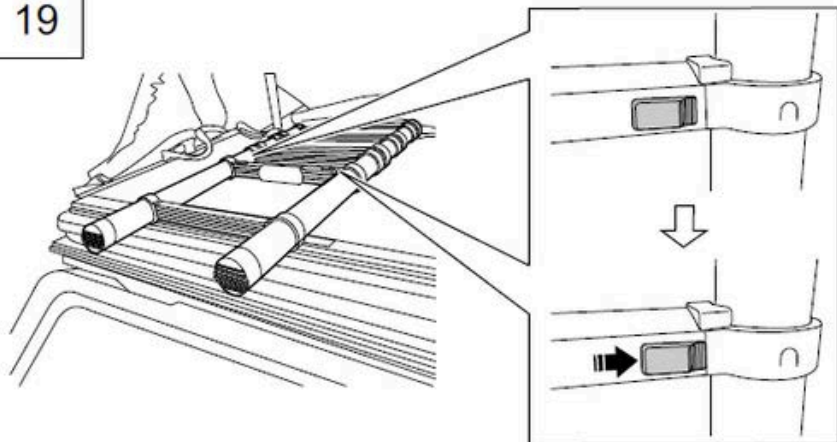
7/24



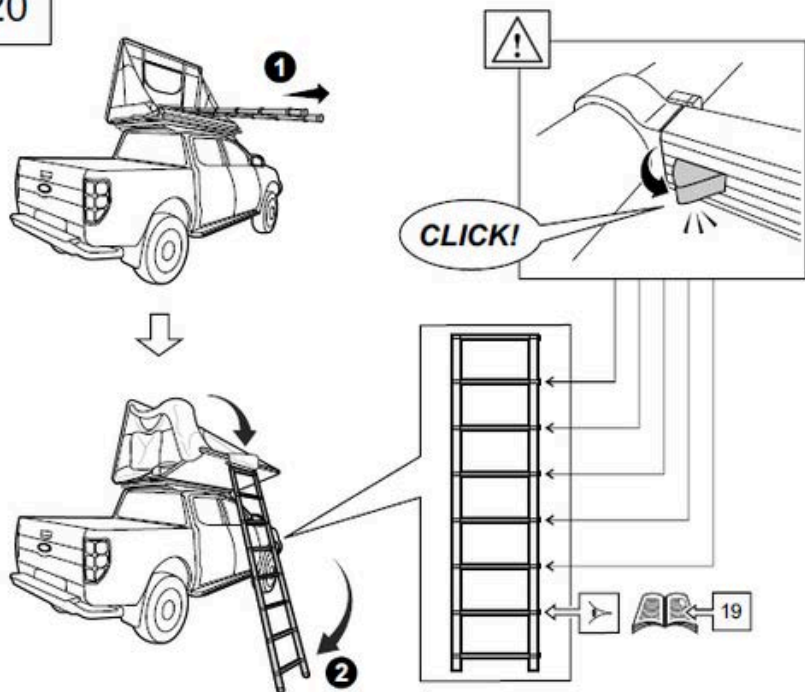




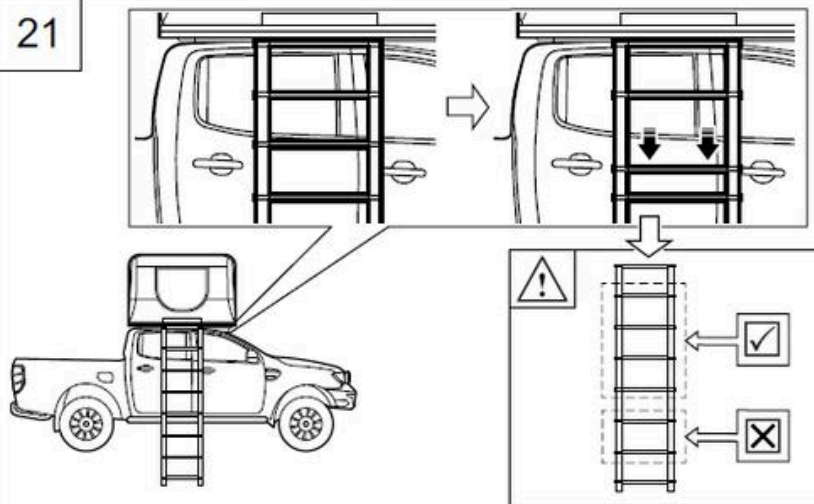
19



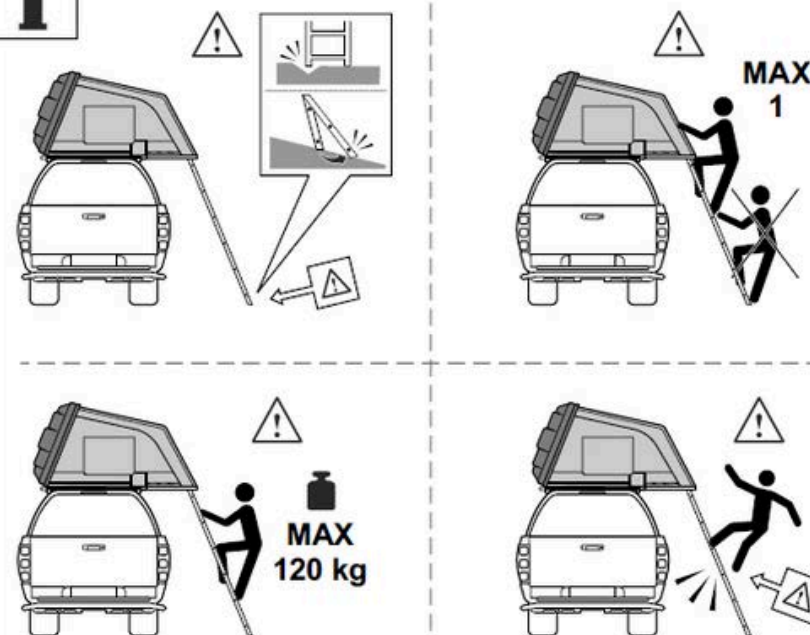
20



21



i


**ARB**  
4x4 ACCESSORIES

802200V2

© COPYRIGHT ARB Corp 2024

25/10/2024

12/24

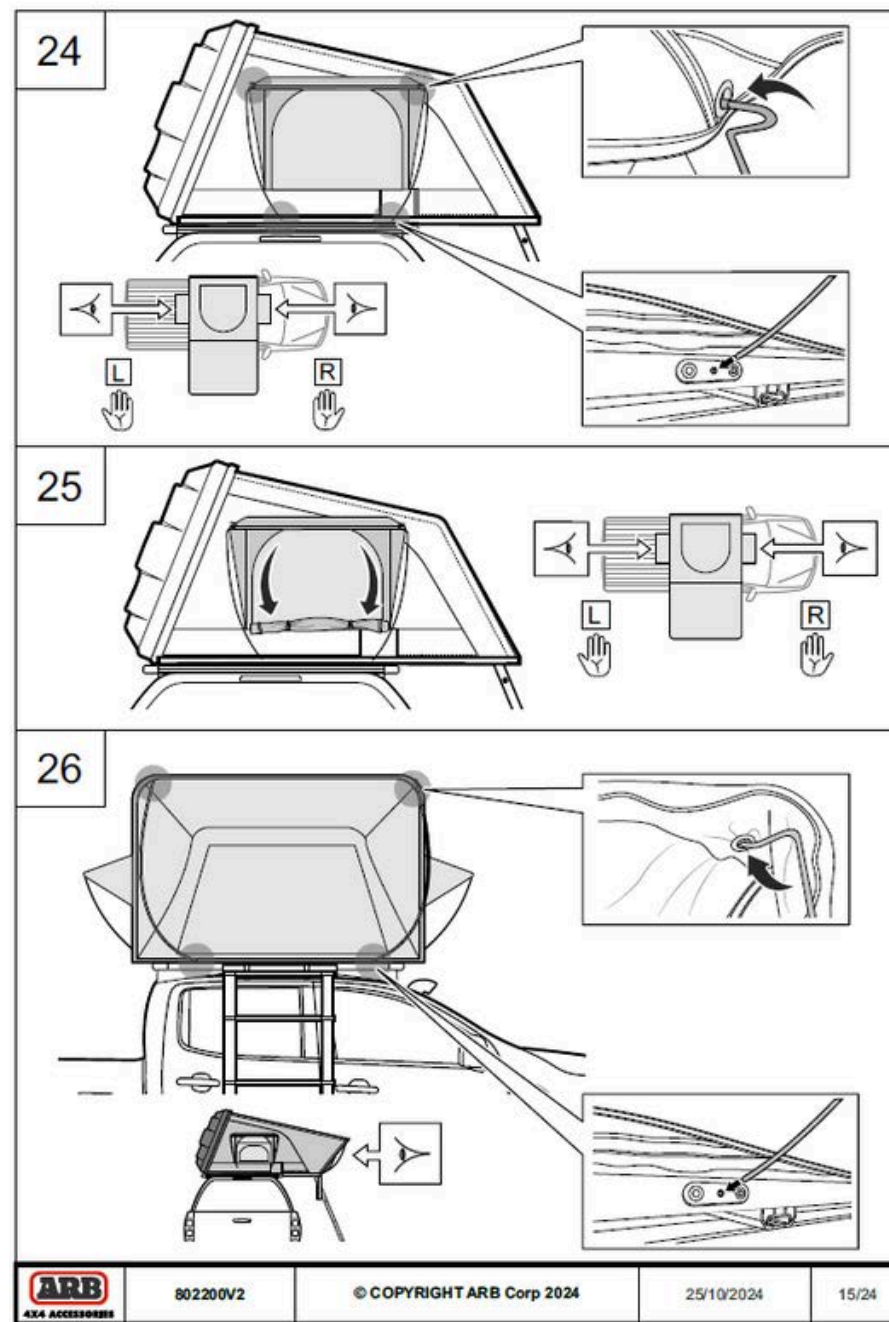
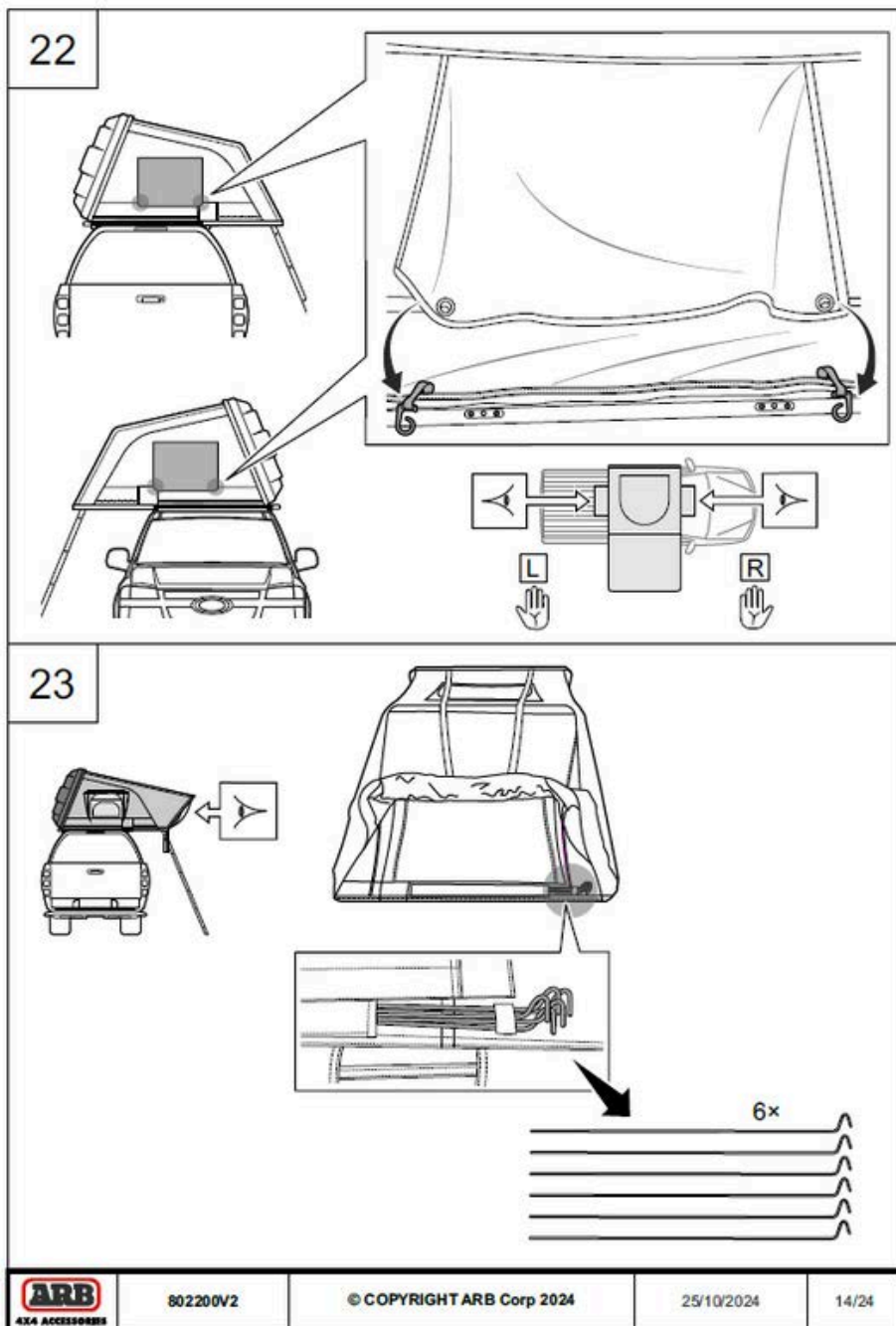
**ARB**  
4x4 ACCESSORIES

802200V2

© COPYRIGHT ARB Corp 2024

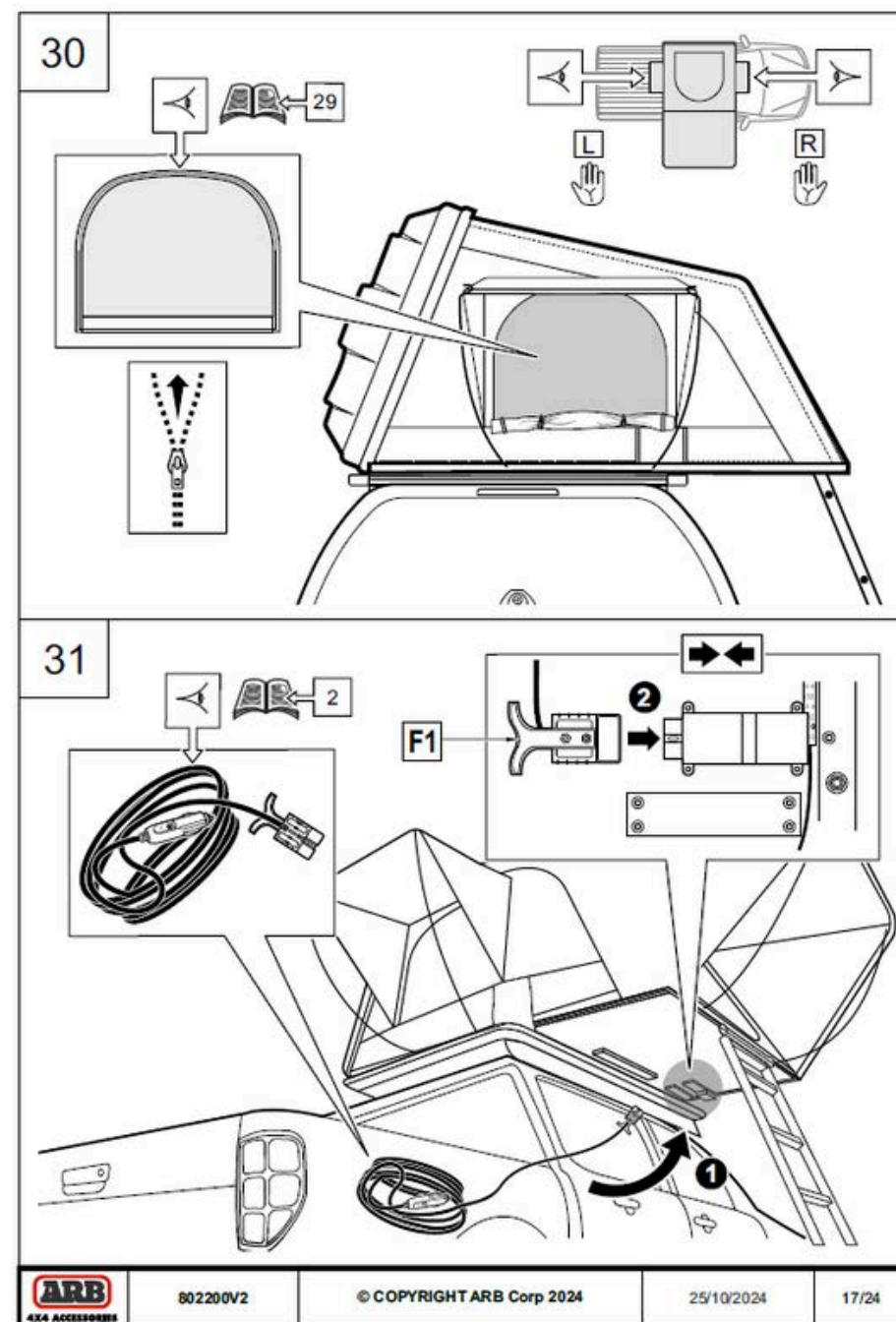
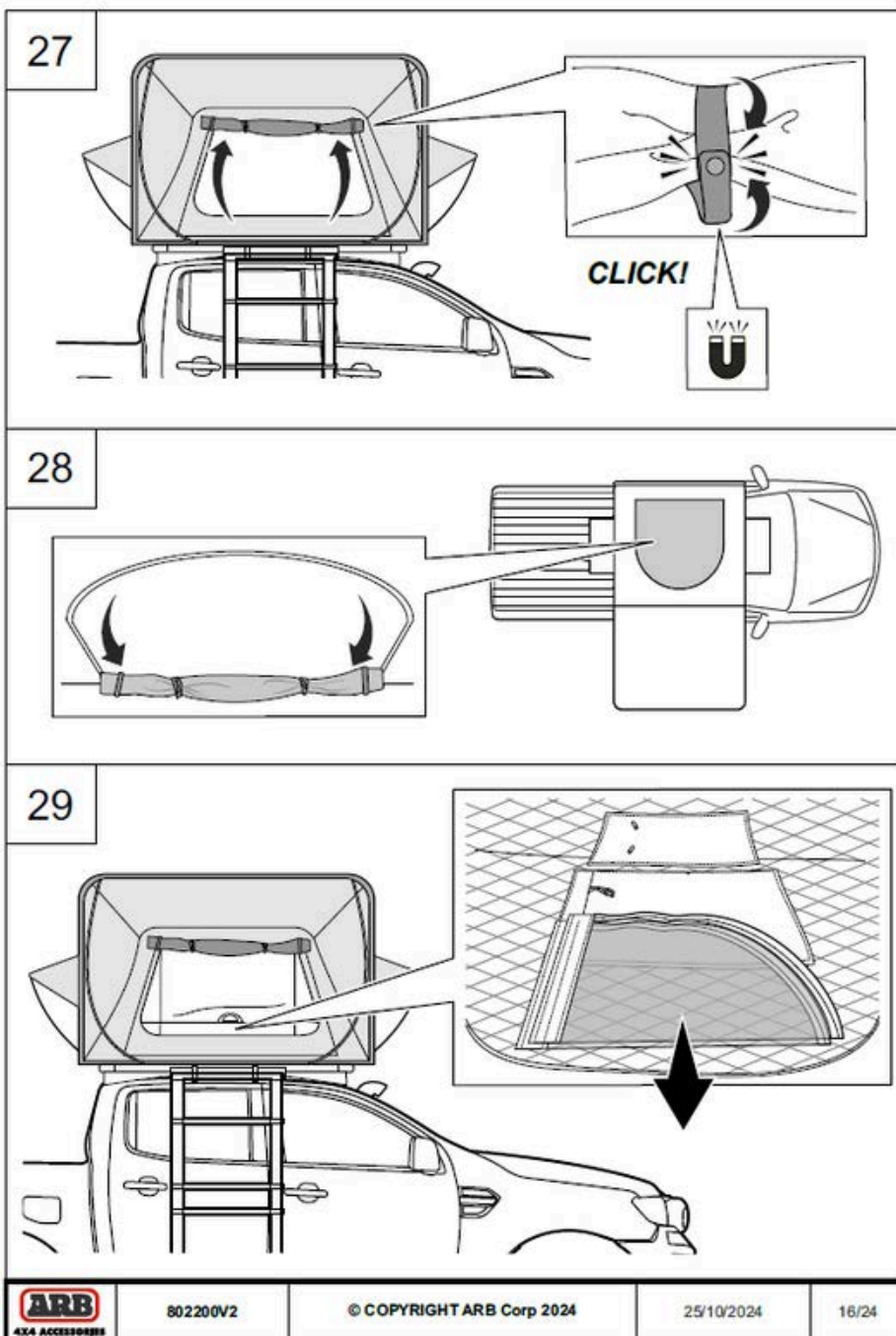
25/10/2024

13/24



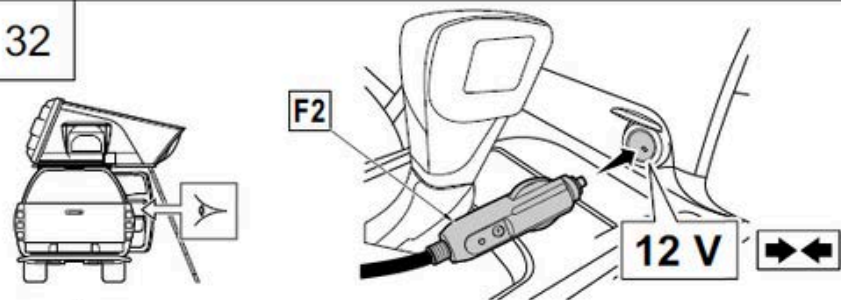
## APPENDIX



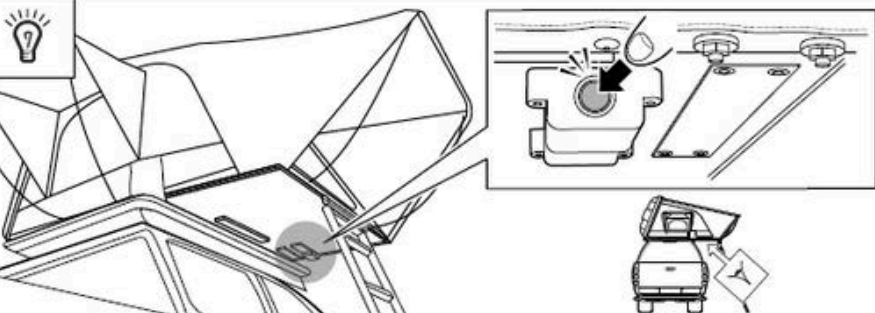
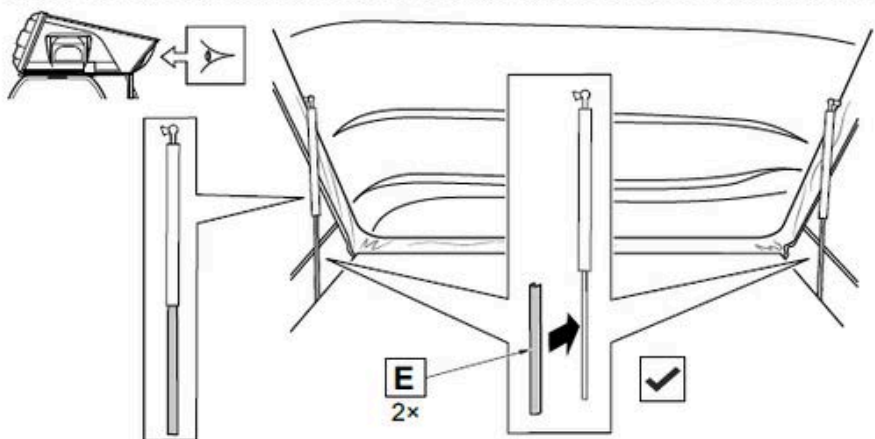
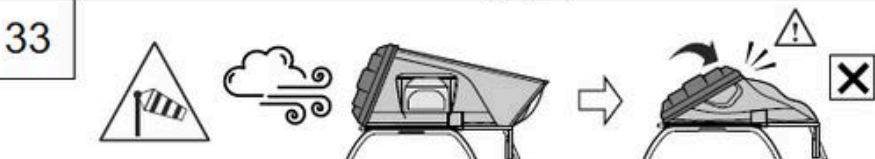


## APPENDIX

32



33



802200V2

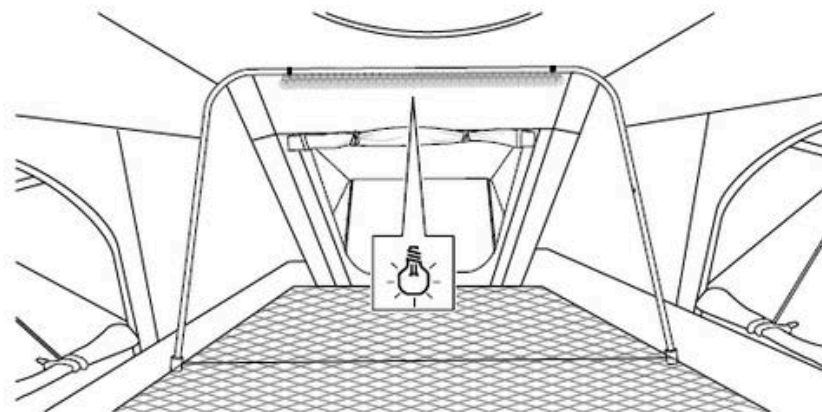
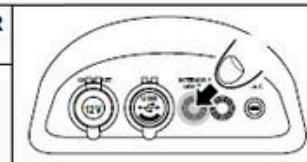
© COPYRIGHT ARB Corp 2024

25/10/2024

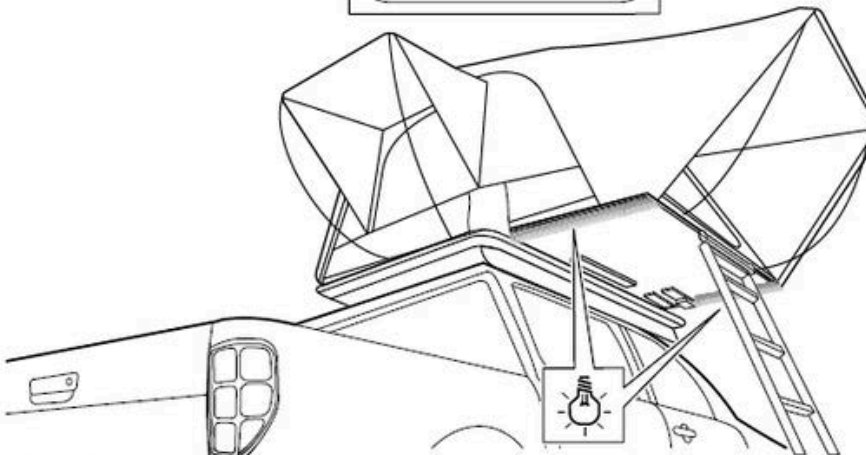
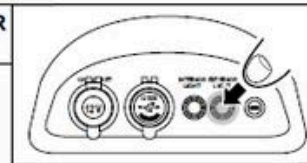
18/24



INTERIOR LIGHT



EXTERIOR LIGHT



802200V2

© COPYRIGHT ARB Corp 2024

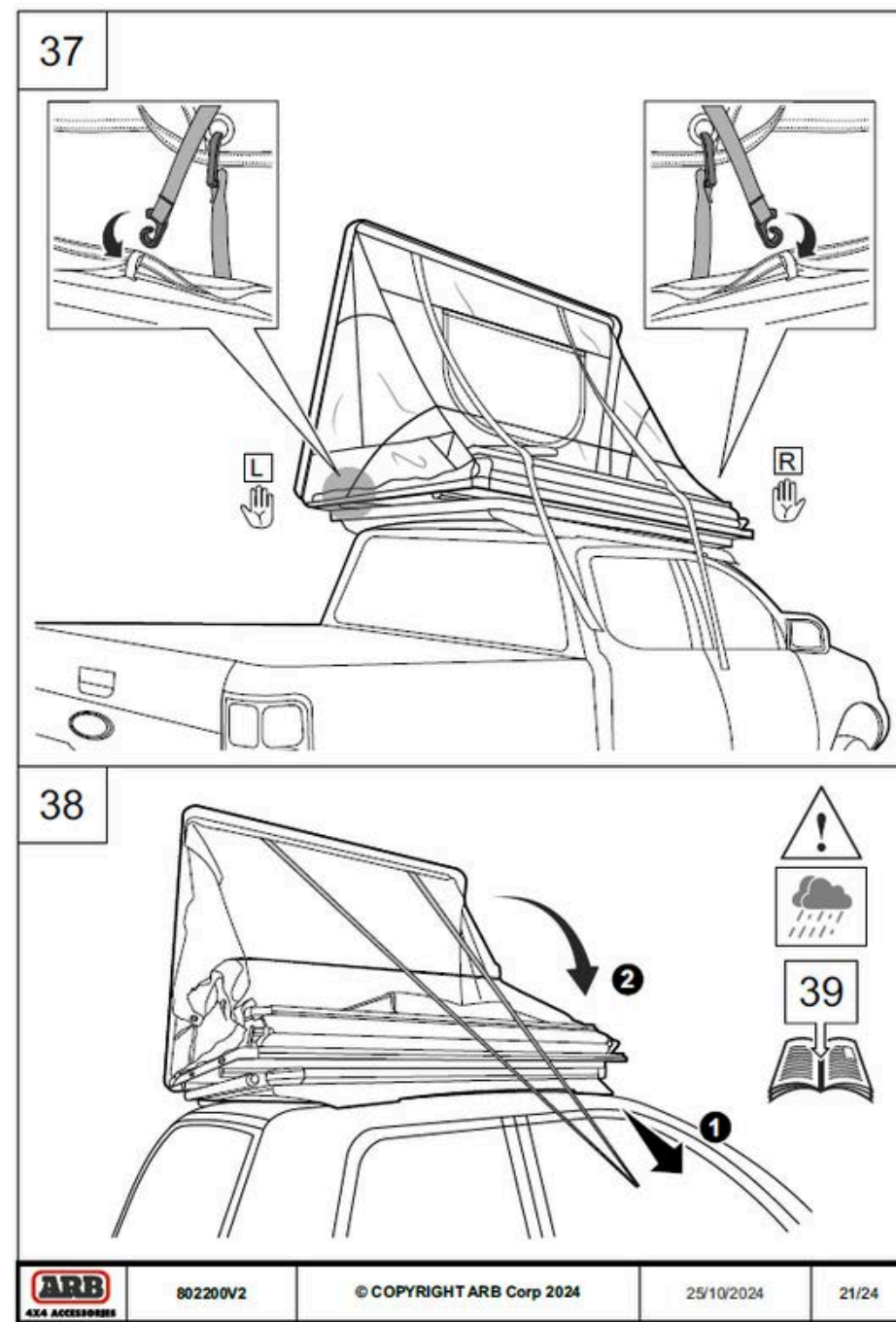
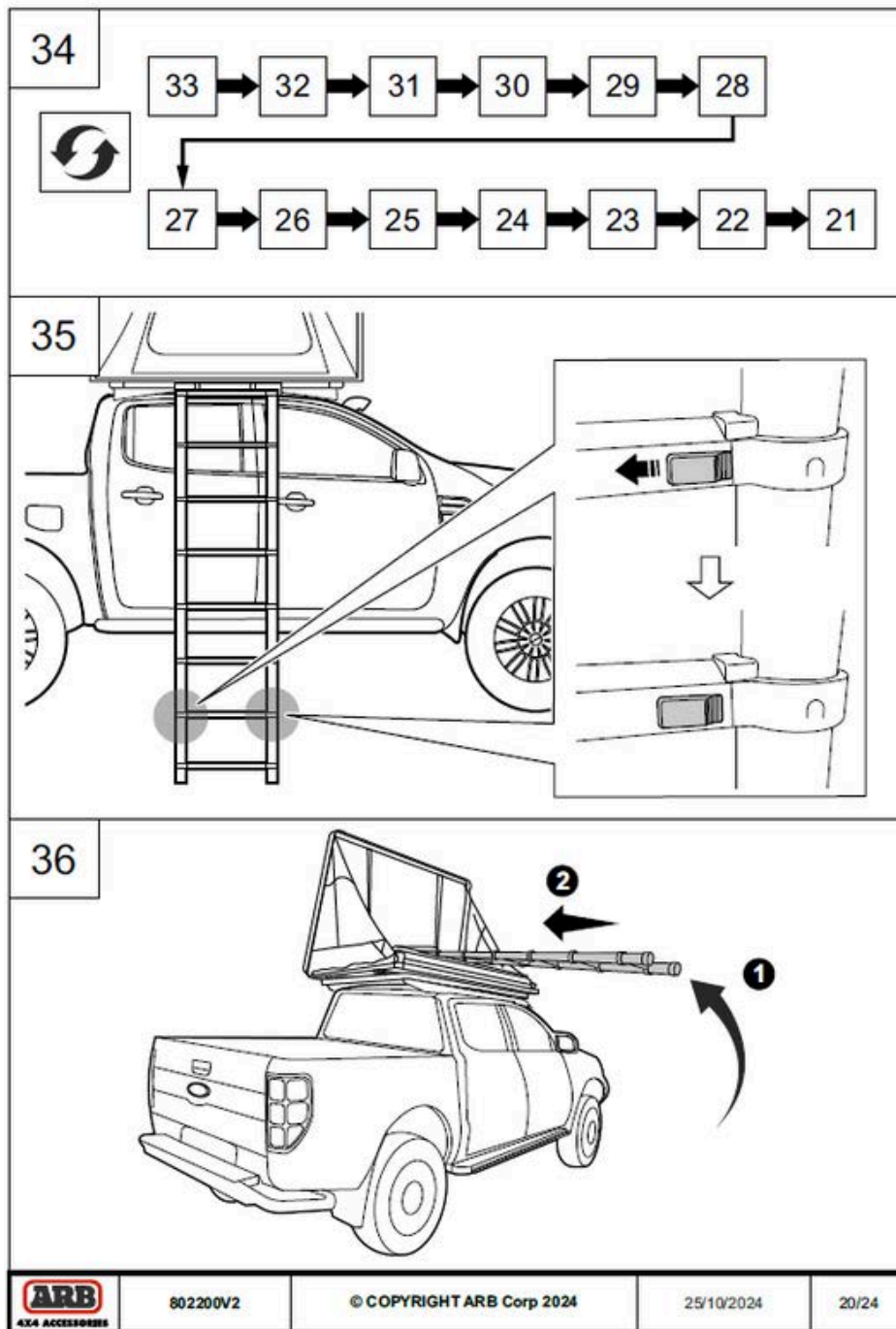
25/10/2024

19/24

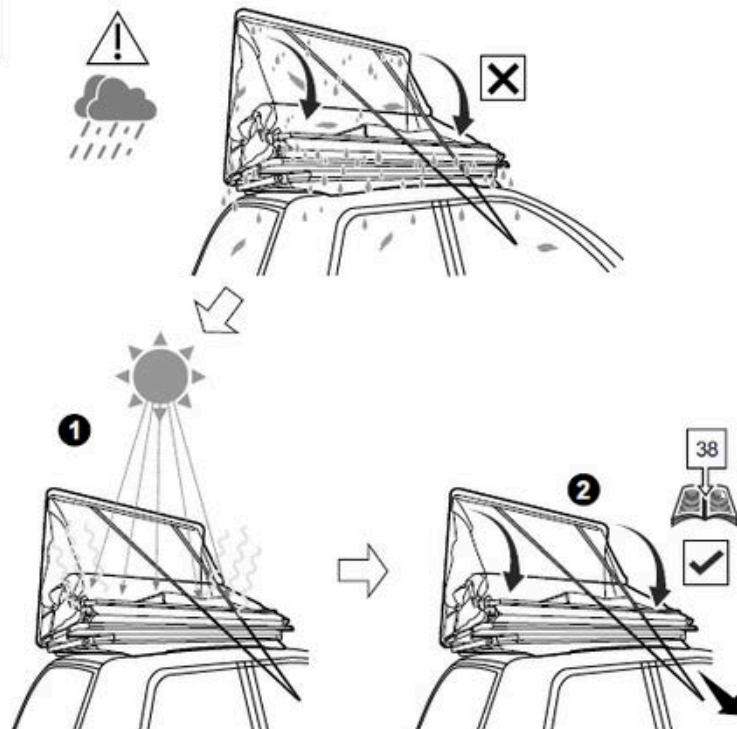
## APPENDIX



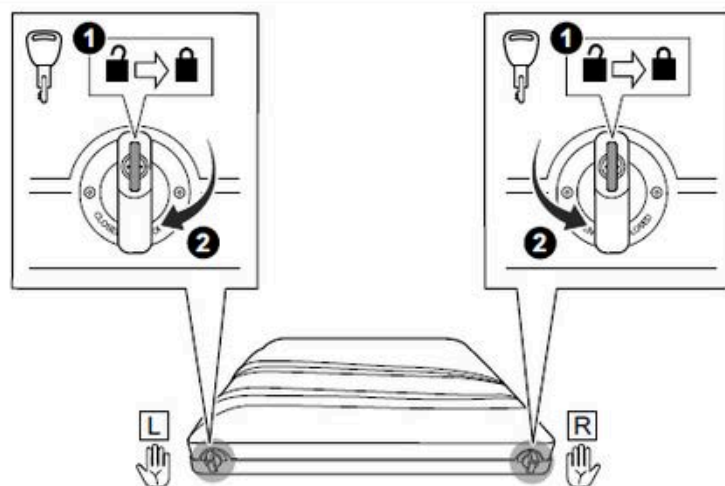




39



40



802200V2

© COPYRIGHT ARB Corp 2024

25/10/2024

22/24

## APPENDIX



## ARB Altitude Tent Display Stand



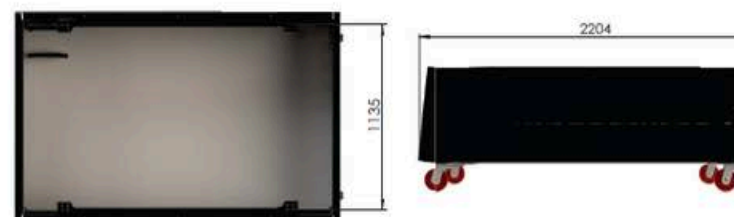
Note: the colors are for illustrative purposes only

**si retail**  
SOLUTIONS IN RETAIL

THE IMAGES SHOWN ON THIS PAGE ARE CONCEPTUAL ONLY, AND MAY BE SUBJECT TO CHANGE IN ORDER TO SUIT A PARTICULAR MANUFACTURING OR TRANSPORT REQUIREMENT.



Back and Front elevation



Top and Side elevation

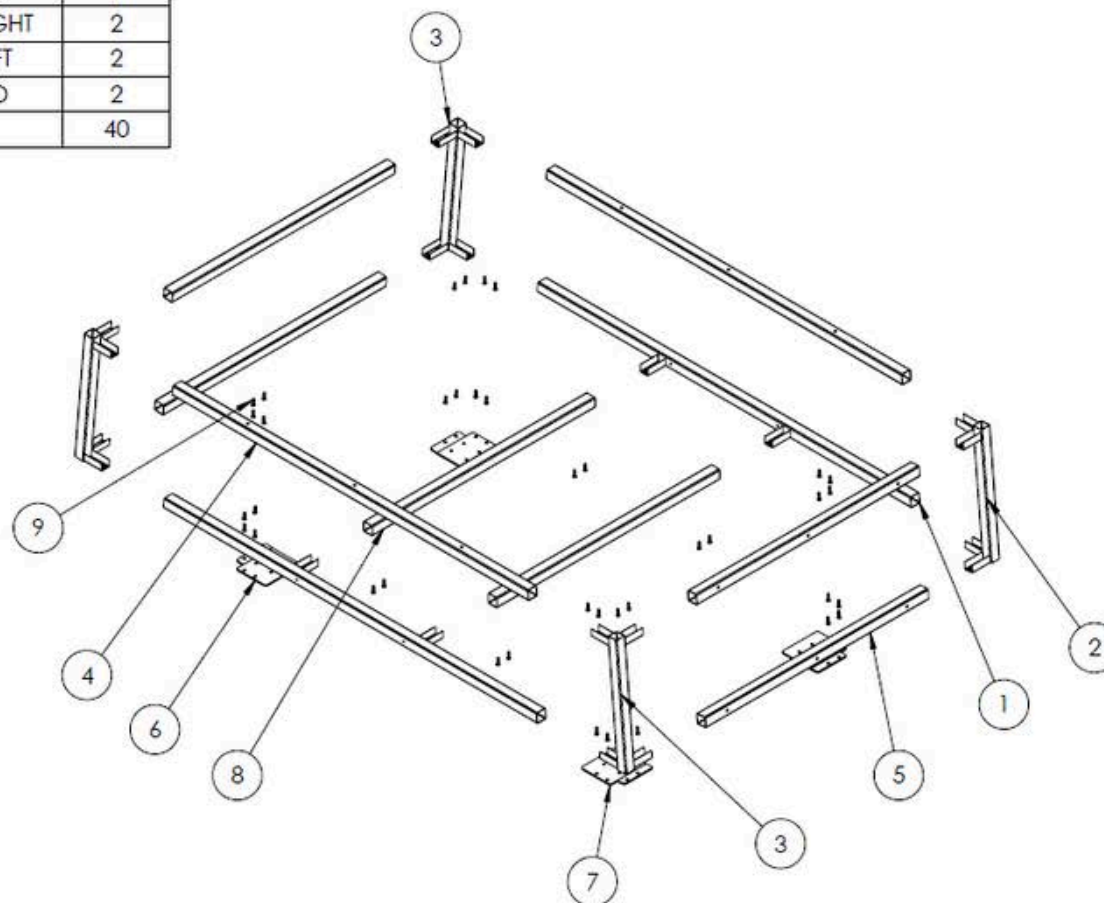
02/10/2024



THE DESIGNS & CONCEPTS SHOWN ARE THE PROPERTY OF SI RETAIL Pty Ltd. NO PART MAY BE SHOWN, QUOTED OR REPRODUCED TO ANY THIRD PARTY WITHOUT PRIOR WRITTEN PERMISSION FROM SI RETAIL Pty Ltd.

COPYRIGHT © 2023



ITEM NO.	PART NUMBER	DESCRIPTION	QTY.
1	2170486A4	SIDE BOTTOM MEMBER, ALTITUDE DISPLAY STAND	2
2	2170486A1-100	VERTICAL MEMBER, ALTITUDE DISPLAY STAND - LEFT	2
3	2170486A1-100	VERTICAL MEMBER, ALTITUDE DISPLAY STAND - RIGHT	2
4	2170486A2	SIDE TOP MEMBER, ALTITUDE DISPLAY STAND	2
5	2170486A3	HORIZONTAL MEMBER, ALTITUDE DISPLAY STAND	4
6	2170486A13	CASTOR MOUNT, ALTITUDE DISPLAY STAND - RIGHT	2
7	2170486A13	CASTOR MOUNT, ALTITUDE DISPLAY STAND - LEFT	2
8	2170486A3	HORIZONTAL MEMBER, ALTITUDE DISPLAY STAND	2
9	M8X30mm	M8x30mm FURNITURE BOLT BLACK ZINC	40

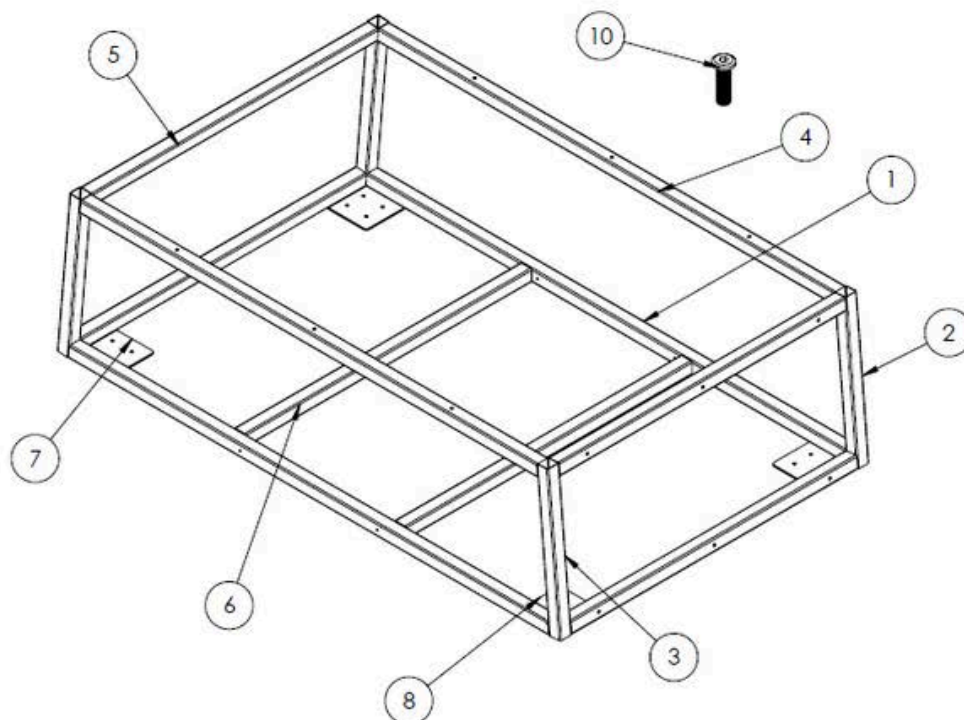
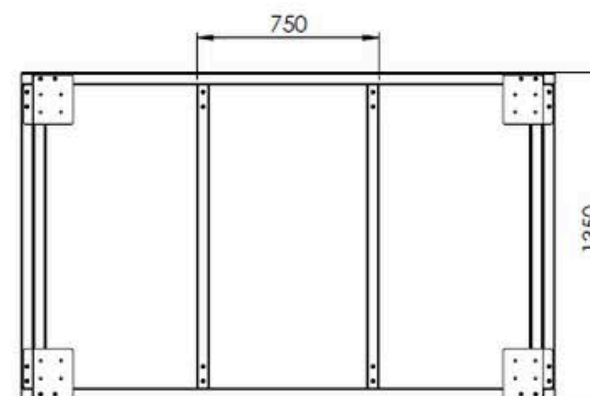
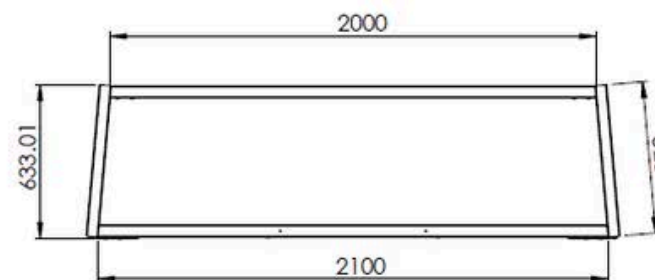
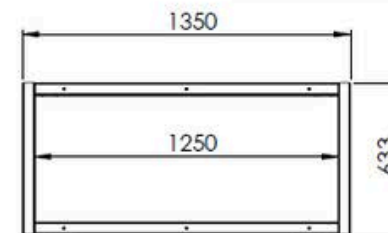




<div><p><b>SOLUTIONS IN RETAIL</b></p><p>THIS DRAWING MAY NOT BE SHOWN, QUOTED OR REPRODUCED BY ANY OTHER PARTY WITHOUT PRIOR WRITTEN CONSENT FROM SI RETAIL Pty Ltd.</p><p>DO NOT SCALE FROM DRAWING</p></div> <div><p>UNLESS OTHERWISE SPECIFIED, ALL DIMENSIONS ARE IN MILLIMETRES.</p><p>FOR DIMENSIONS WHERE TOLERANCES ARE NOT GIVEN, PLEASE USE ISO2768-1 MEDIUM</p><p>COPYRIGHT ©2023</p></div>	<p>CLIENT: ARB</p>	<p>PROJECT No: 2170486 FRAME ASSY.</p>	<p>MATERIAL: REFER TO PART DRAWINGS</p>	<p>DATE: 2/10/2024</p>	<p>REVISION: A</p>
	<p>PROJECT: 2170486 FRAME</p>	<p>ITEM No: N/A</p>	<p>COLOUR:</p>		<p>SCALE: 1:20</p>
	<p>TITLE: EXPLODED VIEW 2170486 Frame</p>	<p>DRAWN BY: PATRICK MORAES</p>	<p>FINISH:</p>		<p>SHEET: 4 OF 4</p>
				<p>DWG No: 2170486 Frame</p>	

## APPENDIX

ITEM NO.	PART NUMBER	DESCRIPTION	QTY.
1	2170486A4	SIDE BOTTOM MEMBER, ALTITUDE DISPLAY STAND	2
2	2170486A1-100	VERTICAL MEMBER, ALTITUDE DISPLAY STAND - LEFT	2
3	2170486A1-100	VERTICAL MEMBER, ALTITUDE DISPLAY STAND - RIGHT	2
4	2170486A2	SIDE TOP MEMBER, ALTITUDE DISPLAY STAND	2
5	2170486A3	HORIZONTAL MEMBER, ALTITUDE DISPLAY STAND	4
6	2170486A3	HORIZONTAL MEMBER, ALTITUDE DISPLAY STAND	2
7	2170486A13	CASTOR MOUNT, ALTITUDE DISPLAY STAND - RIGHT	2
8	2170486A13	CASTOR MOUNT, ALTITUDE DISPLAY STAND - LEFT	2
9	M8X30mm	M8x30mm FURNITURE BOLT BLACK ZINC	40

REVISIONS			
REV.	DESCRIPTION	DATE	
A		26/09/2024	3

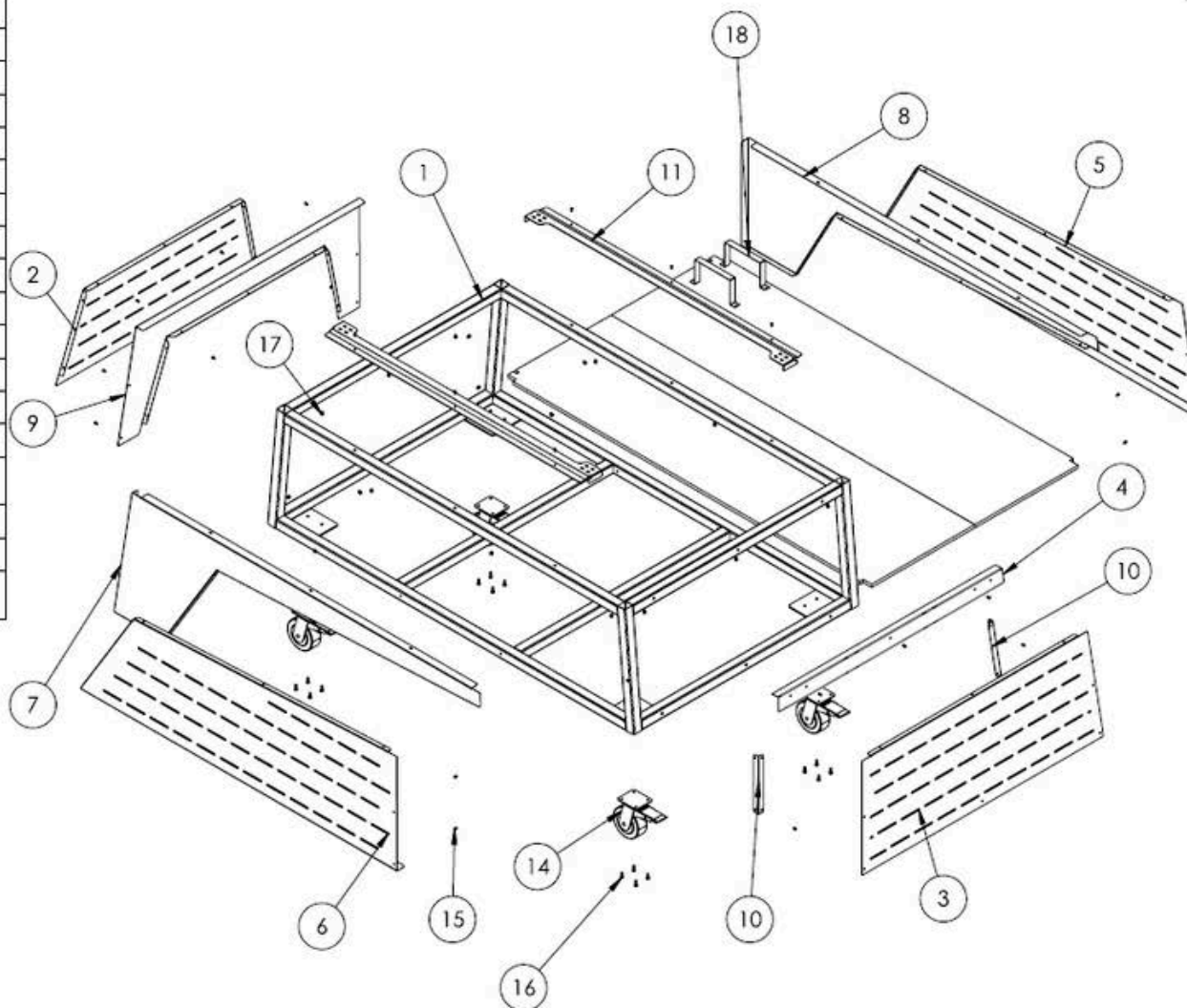



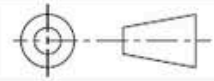
<div><p><b>SOLUTIONS IN RETAIL</b></p><p>THIS DRAWING MAY NOT BE SHOWN, QUOTED OR REPRODUCED BY ANY OTHER PARTY WITHOUT PRIOR WRITTEN CONSENT FROM SI RETAIL PTY LTD.</p><p>DO NOT SCALE FROM DRAWING</p></div> <div><p>UNLESS OTHERWISE SPECIFIED, ALL DIMENSIONS ARE IN MILLIMETRES.</p><p>FOR DIMENSIONS WHERE TOLERANCES ARE NOT GIVEN, PLEASE USE ISO2768-T1 MEDIUM</p><p>COPYRIGHT ©2023</p></div>	CLIENT: ARB	PROJECT No: 2170486 FRAME ASSY.	MATERIAL: REFER TO PART DRAWINGS	DATE: 2/10/2024	REVISION: A
	PROJECT: 2170486 FRAME	ITEM No: N/A	COLOUR:		SCALE: 1:20
	TITLE: FULL ASSEMBLY 2170486 Frame	DRAWN BY: PATRICK MORAES	FINISH:		SHEET: 3 OF 4
		DWG No: 2170486 Frame			A3

## APPENDIX



ITEM NO.	PART NUMBER	DESCRIPTION	QTY.
1	2170486 Frame	FULL FRAME	1
2	2170486A8	CLAD 2 FR	1
3	2170486A6	CLAD 2 FR	1
4	2170486A5	CLAD 1 FR	1
5	2170486A10 LH	CLAD 2 LH	1
6	2170486A10 RH	CLAD 2 RH	1
7	2170486A9 RH	CLAD 1 RH	1
8	2170486A9 LH	CLAD 1 LH	1
9	2170486A7	CLAD 1 RR	1
10	2170486A11	CORNER BRACE	2
11	2170486A12	BASERACK BLADE	2
12	BOARD	LEFT PART	1
13	BOARD	RIGHT PART	1
14	CASTER	150mm WITH BRAKE	4
15	M6x12 BUTTON	M6x12mm SOCKET HEAD BUTTON SCREW	46
16	M8x20mm Hex Head	CASTER BOLTS	16
17	M6 NUT	M6 HEX NUT	20
18	2170486 POWER SUPPLY BRKT	POWER SUPPLY BRKT	2

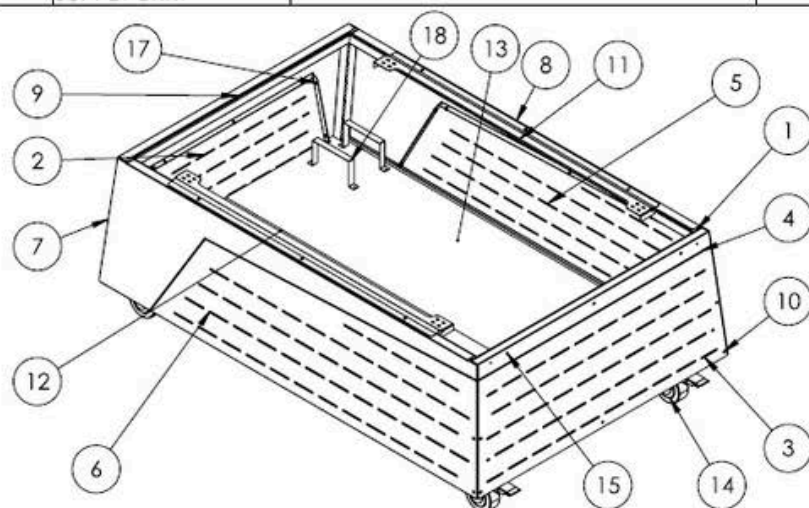
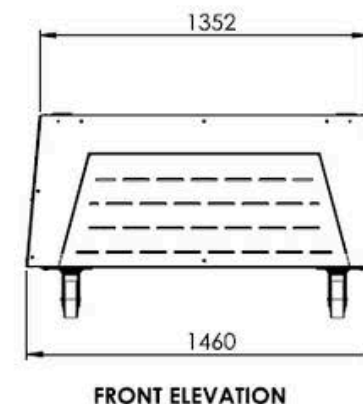
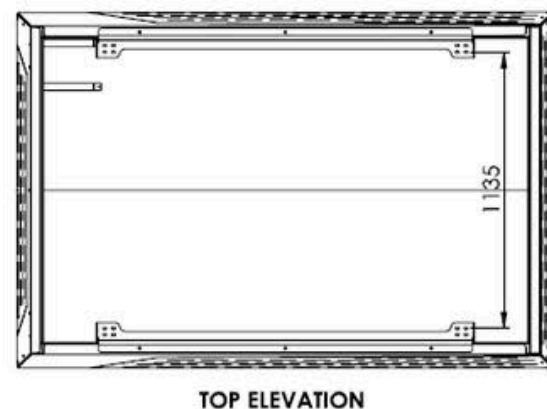
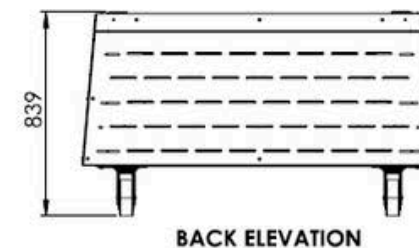
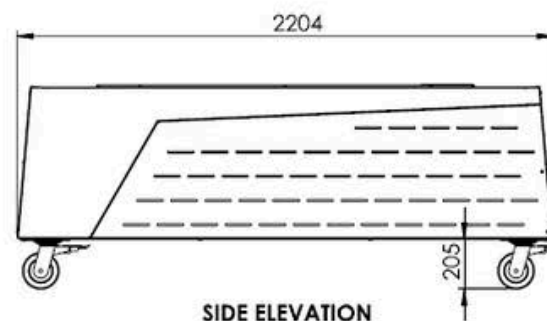




 <p>UNLESS OTHERWISE SPECIFIED, ALL DIMENSIONS ARE IN MILLIMETRES.</p> <p>FOR DIMENSIONS WHERE TOLERANCES ARE NOT GIVEN, PLEASE USE ISO 2768-1 MEDIUM</p> <p><b>SOLUTIONS IN RETAIL</b></p> <p>THIS DRAWING MAY NOT BE SHOWN, QUOTED OR REPRODUCED BY ANY OTHER PARTY WITHOUT PRIOR WRITTEN CONSENT FROM SI RETAIL Pty Ltd.</p> <p>DO NOT SCALE FROM DRAWING      COPYRIGHT ©2023</p>	CLIENT: <b>ARB</b>	PROJECT No: 2170486 GERAL ASSY.	MATERIAL: <b>REFER TO PART DRAWINGS</b>	DATE: <b>2/10/2024</b>	REVISION: <b>A</b>
	PROJECT: <b>ARB Altitude Tent Display Stand</b>	ITEM No: <b>N/A</b>	COLOUR:		SCALE: <b>1:20</b>
	TITLE: <b>EXPLODED VIEW - 2170486</b>	DRAWN BY: PATRICK MORAES	FINISH:		SHEET: <b>2 OF 4</b>
			DWG No: <b>2170486A10 LH</b>		<b>A3</b>

## APPENDIX

ITEM NO.	PART NUMBER	DESCRIPTION	QTY.
1	2170486 Frame	FULL FRAME	1
2	2170486A8	CLAD 2 FR	1
3	2170486A6	CLAD 2 FR	1
4	2170486A5	CLAD 1 FR	1
5	2170486A10 LH	CLAD 2 LH	1
6	2170486A10 RH	CLAD 2 RH	1
7	2170486A9 RH	CLAD 1 RH	1
8	2170486A9 LH	CLAD 1 LH	1
9	2170486A7	CLAD 1 RR	1
10	2170486A11	CORNER BRACE	2
11	2170486A12	BASERACK BLADE	2
12	BOARD	LEFT PART	1
13	BOARD	RIGHT PART	1
14	CASTER	150mm WITH BRAKE	4
15	M6x12 BUTTON	M6x12mm SOCKET HEAD BUTTON SCREW	46
16	M8x20mm Hex Head	CASTER BOLTS	16
17	M6 NUT	M6 HEX NUT	20
18	2170486 POWER SUPPLY BRKT	POWER SUPPLY BRKT	2

REVISIONS			
REV.	DESCRIPTION	DATE	
A		1/10/2024	5



<div><p><b>SOLUTIONS IN RETAIL</b></p><p><small>THIS DRAWING MAY NOT BE SHOWN, QUOTED OR REPRODUCED BY ANY OTHER PARTY WITHOUT PRIOR WRITTEN CONSENT FROM SI RETAIL Pty Ltd.</small></p><p><b>DO NOT SCALE FROM DRAWING</b></p></div> <div><p><small>UNLESS OTHERWISE SPECIFIED, ALL DIMENSIONS ARE IN MILLIMETRES.</small></p><p><small>FOR DIMENSIONS WHERE TOLERANCES ARE NOT GIVEN, PLEASE USE ISO2768-1 MEDIUM</small></p></div>	<p><b>CLIENT:</b> <b>ARB</b></p>	<p><b>PROJECT No:</b> <b>2170486</b></p>	<p><b>MATERIAL:</b> <b>REFER TO PART DRAWINGS</b></p>	<p><b>DATE:</b> <b>2/10/2024</b></p>	<p><b>REVISION:</b> <b>A</b></p>
	<p><b>PROJECT:</b> <b>ARB Altitude Tent Display Stand</b></p>	<p><b>ITEM No:</b> <b>N/A</b></p>	<p><b>COLOUR:</b></p>		<p><b>SCALE:</b> <b>1:20</b></p>
	<p><b>TITLE:</b> <b>FULL ASSEMBLY - 2170486</b></p>	<p><b>DRAWN BY:</b> <b>PATRICK MORAES</b></p>	<p><b>FINISH:</b></p>		<p><b>SHEET:</b> <b>1 OF 4</b></p>
	<p><b>COPYRIGHT ©2023</b></p>			<p><b>DWG No:</b> <b>2170486A10 LH</b></p>	