



NEXT-GENERATION

FORD EVEREST

Full range of ARB accessories



4X4 ACCESSORIES

Two iconic brands have joined forces to bring you an industry-leading vehicle personalisation experience ahead of the launch of the Ford Everest.

A strategic collaboration between Ford and ARB has resulted in the best range of accessories for work and play so you can live your life to the fullest.



FRONTAL PROTECTION

Protect the front end of your vehicle with a winch-compatible ARB bull bar designed to give you the protection and confidence to explore any terrain.



ARB Summit MKII Bar

The ARB Summit MKII Bar muscles up with the most innovative and advanced technology yet, all while fully integrating with Ford's suite of advanced driver assist safety technology that is specific to the Everest. The state-of-the-art Summit MKII Bar takes key components of its flagship namesake and kicks it up a notch with an ultra-modern design that's sure to turn heads.



ARB Summit Sahara MKII Bar

Boasting many of the features of the Summit MKII Bar, the ARB Summit Sahara MKII Bar offers sleek yet rigid styling without sacrificing practicality. The Sahara series of bars also features either a polished alloy tube or a matte black tube kit with an LED light bar recessed into the top hoop, further underlining ARB's commitment to fabrication excellence.

ARB SpartanBar

Using an impact-absorbing, resilient and incredibly durable polyethylene material, the SpartanBar features cutting-edge design and engineering that creates a bull bar offering unsurpassed levels of safety for both driver and pedestrian.



ARB StealthBar

The StealthBar provides an alternative tough aesthetic appearance without compromising on vehicle protection, at approximately 30% less weight than an ARB SpartanBar. Designed using the same cutting-edge polyethylene material and manufacturing process, these bars are now the only bull bar approved for use in Europe.



UNDER VEHICLE PROTECTION

When traversing over roads less travelled, the underbody of your 4WD is one of the areas most susceptible to damage. Protect your vehicle from dangerous rocks, ruts or logs with ARB's range of Under Vehicle Protection.



ARB Under Vehicle Protection (UVP)

Providing an unrivalled safeguard for the underside of your vehicle, ARB's UVP is laser cut, press formed and folded to provide superior strength. Designed to the specifications of the Ford Everest, it minimises the risk of damage to most vital components of the vehicle drivetrain.



ARB Under Vehicle Armour (UVA)

Made in Australia from durable and impact-resistant cross-linked polymer, ARB's UVA weighs a fraction of any steel aftermarket alternatives, gives greater coverage, is easy to install and remove for vehicle servicing, and is compatible with the OE bumper, as well as bull bars, and the recovery points.



SIDE PROTECTION

Designed to protect the doors and side sills of your vehicle, you won't be afraid when venturing off road with ARB Summit Side Rails and Steps.



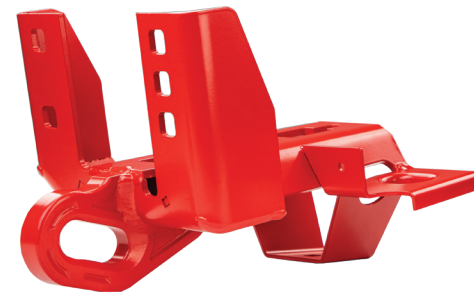
Summit Side Rails and Steps

ARB side protection equipment acts as a shield for your vehicle's vulnerable side panels, protecting them from rocks and road debris frequently encountered during remote area travel. For customers without an ARB front bar or who simply don't require a front rail, a return has been developed to enable fitment of a protection step only.



RECOVERY

ARB Forged Recovery Points are your best friend off road, providing a safer connection point for all forms of winching or snatch recoveries while exploring 4WD tracks.



Forged Recovery Points

ARB Forged Recovery Points are tailored specifically to each vehicle, offering a stronger yet lighter Recovery Point. The ARB Forged Recovery Point slot features a chamfered edge specifically designed to suit both soft and steel shackles. Developed to fit the Ford Everest with UVP, UVA or OE protection, each ARB Forged Recovery Point is rated at 8,000 kilograms up to the maximum turn angle of the front wheels. Both left- and right-hand recovery points have been precision robot-welded and developed to allow for different set-ups of recovery equipment to suit each individual situation. As each point is rated at eight tonnes, the use of bridle straps is not required.

SUSPENSION

Get greater ride comfort and handling across all terrains with an Old Man Emu suspension system from ARB.



Nitrocharger Sport

Old Man Emu's world-renowned Nitrocharger Sport is the shock absorber that has stood the test of time, constantly standing up to the conditions and demands of vehicle owners. The Nitrocharger Sport range utilises significant advances in key componentry and the latest in valving technology to provide tremendous improvements in ride, comfort and handling over all terrains.

MODULAR DRAWER SYSTEMS

Whether it be for a quick weekend getaway or long-haul, interstate adventure, maximise the versatility of your vehicle's cargo space with an ARB Modular Drawer System. Configure to suit your needs while taking cargo and equipment organisation to a whole new level.



ARB Modular Drawer System

With the creation of tailor-made trim panels, ARB has set the perfect aperture for the deployment of a fully integrated drawer suite to fit seamlessly into the Ford Everest. For added practicality, ARB has incorporated accessory switch bezel cut-outs, ideal for use with additional install kits.

SLIDE KITCHEN

Whether at the campsite, the local park, the job site or even the side of the road, enjoy the ease of a fully functioning kitchen in your Ford Everest, wherever you and your 4WD are headed.



Slide Kitchen

Featuring a three-burner stove, sink and ample bench space, ARB's fully freestanding Slide Kitchen can be set up in as little as 15 seconds, offering practicality for any tourer. Beyond being one of the most practical features for any 4WD, the Slide Kitchen also boasts an innovative user-friendly design.

ROOF RACK SYSTEMS

Whether it's the worksite or campsite, make sure all your gear goes with you with ARB's wide range of load carrying solutions, from roof racks, cross bars and more.



BASE Rack

Ultra sleek, boasting a super low mounting profile and lightweight design, the BASE Rack provides unmatched simplicity, flexibility and personalisation for the Ford Everest with a range of accessories for full customisation.



ELECTRICAL

Adding additional lighting options such as driving or auxiliary lights will require electrical components to connect and control them. ARB's range of specific solutions is there to help.



Wiring Loom (Specific Solis Driving Light Harness)

For the Ford Everest, ARB has designed a plug-and-play wiring harness to connect into ARB Solis and Intensity driving lights, offering seamless integration into the ARB bull bar and electrical system.

Patch Loom (Non-ARB Bar Fitment)

ARB has created a universal plug-and-play patch loom that provides a clean high beam signal output for the Ford Everest and suits applications such as non-ARB bar or light fitment and the fitment of roof rack front-facing lights.

LINX A-Pillar Bracket

To complement ARB's LINX Vehicle Accessory Interface, the LINX A-Pillar Bracket mounts the LINX display screen in a safe and easy-to-reach location specific to the Ford Everest. Utilising the LINX mount, the display can be orientated to the desired position so each time the display is returned to the vehicle it's always in the optimal position.

AIR SYSTEMS

ARB's globally used, best-in-class air compressors provide the ability to inflate tyres and camping accessories, run air tools, activate Air Lockers or even reseal a tyre on a wheel, making them a must-have for an off road trip.



Single Air Compressor Kit

The ARB Single Air Compressor has a class-leading flow rate and is constructed of lightweight, high-grade materials that allow for fast tyre inflation, Air Locker activation and a range of other functions. Also available is an engineered bracket system to smoothly integrate an ARB Air Compressor without compromising on space. Designed to be discreetly mounted below the boot floor cavity of the Next-Generation Ford Everest, the ARB Single Air Compressor Kit utilises minimal space of this cavity while leaving room for your air accessories such as gauges, hoses and inflators.

Always take the scenic route with a Safari Snorkel helping to protect your engine from dust and water by raising your vehicle's air intake.



Safari V-Spec Snorkel

Utilising Safari's traditional design concepts and incorporating the very latest in scanning and CAD design software, Safari's V-Spec Snorkel for the Ford Everest is ready to perform in the most extreme environments, protecting the vehicle's engine against water, dust and snow ingress while delivering cool, clean air.



12V AUXILIARY

For the ultimate tourer or tradie, power up with ARB's Everest-specific 12-volt Auxiliary Battery Kit, allowing for extensive off grid travel while not sacrificing the luxuries, whether you're on the go, at camp or the worksite.



Auxiliary Battery Kit

Offering an independent power source for items such as fridges and camp lights, as well as providing added power when winching, an auxiliary battery system also offers peace of mind in the event of a main battery failure. The Ford Everest kit is supplied with a battery tray and mounting hardware, plug-and-play wiring loom and a REDARC BCDC charger.



NEXT-GENERATION
FORD EVEREST



4X4 ACCESSORIES

FIND YOUR NEAREST STORE

arb.com.au