



NEXT-GENERATION

FORD RANGER

Full range of ARB accessories



4X4 ACCESSORIES

Two iconic brands have joined forces to bring you an industry-leading vehicle personalisation experience ahead of the launch of the Next-Generation Ford Ranger.

A strategic collaboration between Ford and ARB has resulted in the best range of accessories for work and play so you can live your life to the fullest.



4X4 ACCESSORIES



FRONTAL PROTECTION

Protect the front end of your vehicle with a winch-compatible ARB bull bar designed to give you the protection and confidence to explore any terrain.



Summit Bar MKII

The ARB Summit Bar MKII muscles up with the most innovative and advanced technology yet, all while fully integrating with Ford's suite of advanced driver assist safety technology that is specific to the Ranger. The state-of-the-art Summit Bar MKII takes key components of its flagship namesake and kicks it up a notch with an ultra-modern design that's sure to turn heads.



Summit Sahara Bar MKII

Boasting many of the features of the Summit Bar MKII, the ARB Summit Sahara Bar MKII offers sleek yet rigid styling without sacrificing practicality. The Sahara series of bars also features either a polished alloy tube or a matte black tube kit with an LED light bar recessed into the top hoop further underlining ARB's commitment to fabrication excellence.

ARB SpartanBar

Using an impact-absorbing, resilient and incredibly durable polyethylene material, the SpartanBar features cutting-edge design and engineering that creates a bull bar offering unsurpassed levels of safety for both driver and pedestrian.



ARB StealthBar

The Stealthbar provides an alternative tough aesthetic appearance without compromising on vehicle protection, at approximately 30% less weight than an ARB SpartanBar. Designed using the same cutting-edge polyethylene material and manufacturing process, these bars are now the only bull bar approved for use in Europe.



UNDER VEHICLE PROTECTION

When traversing over roads less traveled, the underbody of your 4WD is one of the areas most susceptible to damage. Protect your vehicle from dangerous rocks, ruts or logs with ARB's range of Under Vehicle Protection.



ARB Under Vehicle Protection (UVP)

Providing an unrivaled safeguard for the underside of your vehicle, ARB's UVP is laser cut, press formed and folded to provide superior strength. Designed to the specifications of the Next-Generation Ford Ranger, it minimises the risk of damage to most vital components of the vehicle drivetrain.



ARB Under Vehicle Armour (UVA)

Made in Australia from durable and impact-resistant cross-linked polymer, ARB's UVA weighs a fraction of any steel aftermarket alternatives, gives greater coverage, is easy to install and remove for vehicle servicing, and is compatible with the OE bumper, as well as bull bars, and the recovery points.



REAR STEP TOW BAR

ARB's Summit MKII Rear Step Tow Bar combines design, ARB engineering and a no-compromise approach to protection and performance to the rear of the vehicle, particularly when traversing steep, rocky terrain.



Summit MKII Rear Step Tow Bar

To complement the Next-Generation Ford Ranger, an ARB Summit MKII Rear Step Tow Bar has been developed to work with the original equipment lower tub step and provide valuable rear protection. Optional lower tub protection and rear eighth tonne-rated recovery points have been developed to ensure the RSTB offers the ultimate protection and practicality without compromising style.

SIDE PROTECTION

Designed to protect the doors and side sills of your vehicle, you won't be afraid when venturing off road with ARB Summit Side Rails and Steps.



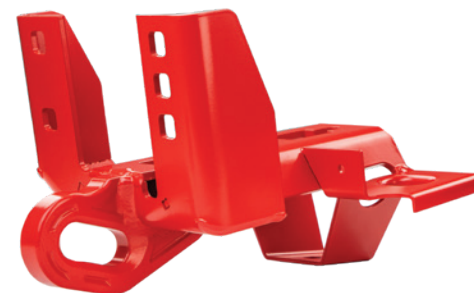
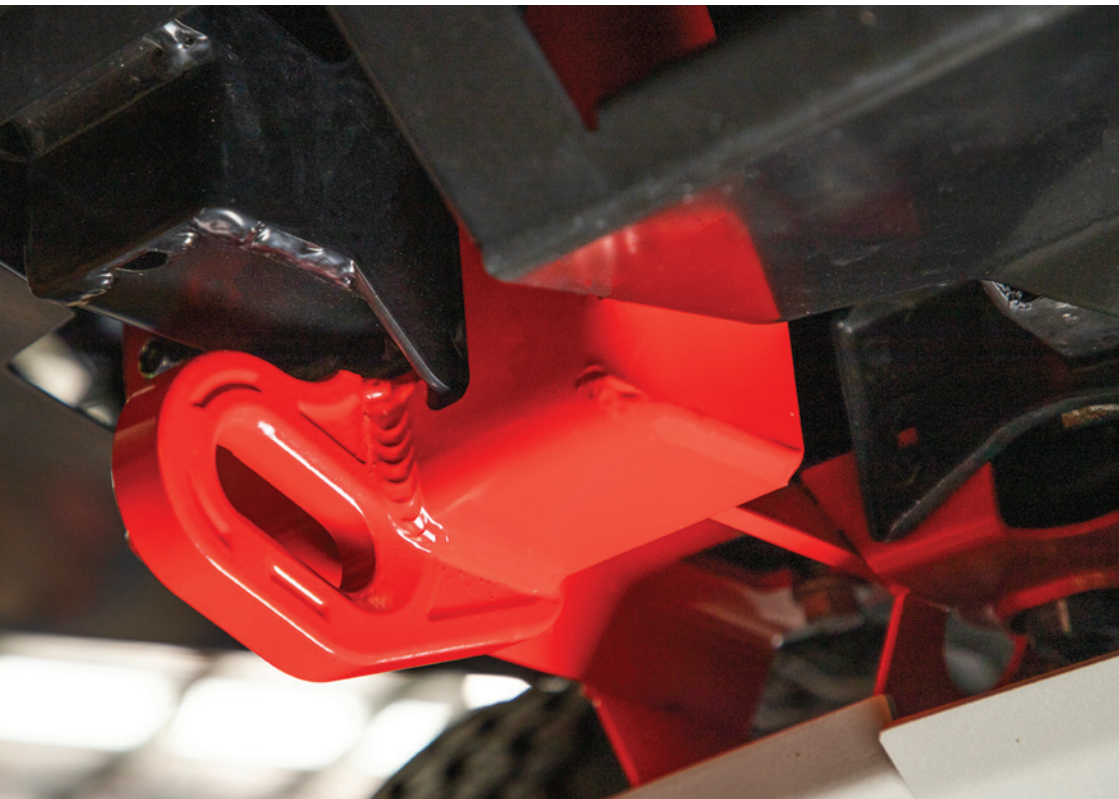
Summit Side Rails and Steps

ARB side protection equipment acts as a shield for your vehicle's vulnerable side panels, protecting them from rocks and road debris frequently encountered during remote area travel. For customers without an ARB front bar or who simply don't require a front rail, a return has been developed to enable fitment of a protection step only.



RECOVERY

ARB's Recovery Points are your best friend off road, providing a safer connection point for all forms of winching or snatch recoveries while exploring 4WD tracks.



Recovery Points (Front Forged + Rear)

ARB Recovery Points are tailored specifically to each vehicle, offering a stronger yet lighter Recovery Point. The ARB Recovery Point slot features a chamfered edge specifically designed to suit both soft and steel shackles. Developed to fit the Next-Generation Ford Ranger with UVP, UVA or OE protection, each ARB Recovery Point is rated at 8,000kg up to the maximum turn angle of the front wheels. Both left and right hand recovery points have been precision robot-welded and developed to allow for different set-ups of recovery equipment to suit each individual situation. As each point is rated at eight tonnes, the use of bridle straps is not required. Front Recovery Points are a forged construction.

BACK OF PICKUP

With a style to suit every need, an ARB canopy is the perfect solution for storing anything from camping gear to tools while the ARB Sportlid offers secure and weatherproof storage for your gear, as well as functional load carrying capacity on the top.



Ascent

The Ascent Canopy is ARB's feature-packed flagship canopy, offering the highest level of usability and vehicle integration in an ultra-premium design. With a raft of standard features including fully integrated central locking and push-button window switches, the Ascent is the solution for those who live an active lifestyle and want their Next-Generation Ranger to look just as good off road as it does in the parking lot.



Classic Plus

Building on the proven design of the Classic Canopy, the Classic Plus Canopy integrates a single, centralised, electronic handle rear door that incorporates keyless entry and slam-shut style operation. The Classic Plus Canopy maintains the popular Classic shell, available in a smooth finish and embodying the proven design and engineering of the Ascent Canopy's central locking system for the Next-Generation Ranger.



Classic

ARB's Classic Canopy has stood the test of time, offering unrivalled quality, practicality and affordability. With the option of a smooth or textured exterior, an ARB Classic Canopy is the perfect solution to increase the protected storage space of your utility vehicle. With a range of accessories available, including canopy-mounted roof bars and racks, the Classic Canopy has been tailored to suit the Next-Generation Ford Ranger.



Sportlid

The ARB Sportlid is a great option when it comes to enhancing the sporty styling of the Next-Generation Ford Ranger, while offering secure and weatherproof storage for gear, with superior protection against dust ingress, as well as functional load carrying capacity on the top.



Tailgate Assist

The perfect solution to the struggle of lowering and raising the Next-Generation Ford Ranger's heavy tailgate, ARB's Tailgate Assist safely controls the opening speed and reduces the effort required to close while enabling simple, one-handed operation.



SUSPENSION

Get greater ride comfort and handling across all terrains with an Old Man Emu suspension system from ARB.



BP-51

Whether it's extended trips, off road 4WDing or tackling terrain, Old Man Emu BP-51 shock absorbers by ARB provide unrivalled performance, setting the benchmark for all driving conditions, thanks to their fully adjustable internal bypass system. The result is the holy grail of suspension performance: the ultimate comfort and control when you need it.



Nitrocharger Sport

Old Man Emu's world-renowned Nitrocharger Sport shock absorber has stood the test of time, constantly standing up to the conditions and demands of vehicle owners. The Nitrocharger Sport range utilises significant advances in key componentry and the latest in valving technology to provide tremendous improvements in ride, comfort and handling over all terrains.



GVM Upgrade (Australia only)

Whether you're carrying tools of the trade or packing up the 4WD for a year-long trip, your Next-Generation Ford Ranger can exceed the original GVM. Old Man Emu is pleased to have development underway for GVM upgrades, with more details expected to be available in the coming months.

MODULAR DRAWER SYSTEMS

Whether it be for a quick weekend getaway or long-haul, interstate adventure, maximise the versatility of your vehicle's cargo space with an ARB Modular Drawer System. Configure to suit your needs while taking cargo and equipment organisation to a whole new level.



ARB Modular Drawer System

With the creation of tailor-made trim panels, ARB has set the perfect aperture for the deployment of a fully integrated drawer suite to fit seamlessly into the Next-Generation Ford Ranger. For added practicality, ARB has incorporated accessory switch bezel cut-outs, ideal for use with additional install kits, all while allowing for fitment with or without the tub liner.

SLIDE KITCHEN*

Whether at the campsite, the local park, the job site or even the side of the road, enjoy the ease of a fully functioning kitchen in your Next-Generation Ford Ranger, wherever you and your 4WD are headed.



Slide Kitchen

Featuring a three-burner stove, sink and ample bench space, ARB's fully freestanding Slide Kitchen can be set up in as little as 15 seconds, offering practicality for any tourer. Beyond being one of the most practical features for any 4WD, the Slide Kitchen also boasts an innovative user-friendly design.

*Not available in some regions, please speak to your local ARB distributor for further information.

ROOF RACK SYSTEMS

Whether it's the worksite or campsite, make sure all your gear goes with you with ARB's wide range of load carrying solutions, from roof racks, cross bars and more.



BASE Rack

Ultra sleek, boasting a super low mounting profile and lightweight design, the BASE Rack provides unmatched simplicity, flexibility and personalisation for the Next-Generation Ford Ranger with a range of accessories for full customisation. The BASE Rack is available for fitment on the cab or the canopy of the vehicle.



ELECTRICAL

Adding additional lighting options such as driving or auxiliary lights will require electrical components to connect and control them. ARB's range of specific solutions is there to help.



Patch Loom (Non-ARB Bar Fitment)

ARB has created a universal plug-and-play patch loom that provides a clean high beam signal output for the Next-Generation Ford Ranger and suits applications such as non-ARB bar or light fitment and the fitment of roof rack front-facing lights.

LINX A-Pillar Bracket

To complement ARB's LINX Vehicle Accessory Interface, the LINX A-Pillar Bracket mounts the LINX display screen in a safe and easy-to-reach location specific to the Next-Generation Ford Ranger. Utilising the LINX mount, the display can be orientated to the desired position so each time the display is returned to the vehicle it's always in the optimal position.

Wiring Loom (Ranger-specific SOLIS Driving Light Harness)

For the Next-Generation Ford Ranger, ARB has designed a plug-and-play wiring harness to connect into ARB Solis and Intensity driving lights, offering seamless integration into the ARB bull bar and electrical system.

AIR SYSTEMS + LOCKER

ARB's world-class Air Locker systems will take you anywhere you choose to go, coupled with our globally used, best-in-class air compressors.



Air Locker

ARB Air Locker locking differentials allow you to tackle the toughest terrain with confidence. As the world's premium selectable locker, and the locker of choice for gruelling 4WDers and rock racers throughout the world, ARB Air Lockers will keep you moving regardless of the conditions. ARB Air Locker differentials directly replace the electric locking system in the front differential of the Next-Generation Ford Ranger.



Twin Air Compressor Kit

The ARB Twin Air Compressor has a class-leading flow rate and is constructed of lightweight, high-grade materials that allow for fast tyre inflation, Air Locker activation and a range of other functions. Also available is an engineered bracket system to smoothly integrate an ARB Air Compressor without compromising on space. Designed to be discreetly mounted in the right rear fender of the Next-Generation Ford Ranger, the ARB Twin Air Compressor Kit allows for the entire tub to remain free for drawers or other accessories.

SNORKELS

Always take the scenic route with a Safari Snorkel helping to protect your engine from dust and water by raising your vehicle's air intake.



Safari V-Spec Snorkel

Utilising Safari's traditional design concepts and incorporating the very latest in scanning and CAD design software, Safari's V-Spec Snorkel for the Next-Generation Ford Ranger is ready to perform in the most extreme environments, protecting the vehicle's engine against water, dust and snow ingress while delivering cool, clean air.



12V AUXILIARY

For the ultimate tourer or tradie, power up with ARB's Ranger-specific 12-volt Auxiliary Battery Kit, allowing for extensive off-grid travel while not sacrificing the luxuries, whether you're on the go, at camp or the worksite.



Auxiliary Battery Kit

Offering an independent power source for items such as fridges and camp lights, as well as providing added power when winching, an auxiliary battery system also offers peace of mind in the event of a main battery failure. The Ford Ranger kit is supplied with a battery tray and mounting hardware, plug-and-play wiring loom and a REDARC BCDC charger.



FUEL TANK

Taking your adventures to the next level just got a whole lot easier with ARB's Frontier Long-Range Diesel Tank. A direct replacement for the factory-fitted tank, allowing you to carry a whopping 140 litres and ensuring that you can go further for longer.



Frontier Long-Range Diesel Tank

Made in Australia from durable and impact-resistant polymer material that's designed to flex with the vehicle's chassis, the ARB Frontier Long-Range Diesel Tank allows a significant upgrade to the Next-Generation Ford Ranger OE fuel tank, allowing 140 litres to be carried.



NEXT-GENERATION
FORD RANGER



4X4 ACCESSORIES

FIND YOUR NEAREST STORE

arb.com.au